

AD 2. AERODROMES

FYWB AD 2.1 AERODROME LOCATION INDICATOR AND NAME

FYWB - Walvis Bay Airport

FYWB AD 2.2 AERODROME GEOGRAPHICAL AND ADMINISTRATIVE DATA

1.	ARP co-ordinates and site at AD	225848S 0143843E 07° / 1500 M from THR09
2.	Direction and distance from (city)	270° East, 8 NM from Walvis Bay
3.	Elevation/reference temperature	299 FT / 25°C
4.	Geoid undulation at AD ELEV PSN	98 FT
5.	MAG VAR/annual change	13° W (2020)/ 0.07° E
6.	Name of aerodrome operator, address, telephone, telefax numbers, e-mail address, AFS address and, if available, website address	Namibia Airports Company Limited Walvis Bay International Airport Walvis Bay Airport Manager Ms. Chrizelda George Contact Details Tel: +264 64 271 100 Telefax: +264 64 200 164 Cell: +264 81 163 5038 (during or after hours) Email : georgec@airports.com.na wvoperations@airports.com.na Website: www.airports.com.na ATC Tel: +264 64 702690/1 Fax: +264 64 702699 AFS: FYWB DYX
7.	Types of traffic permitted (IFR/VFR)	IFR/VFR
8.	Remarks	NIL

FYWB AD 2.3 OPERATIONAL HOURS

1.	AD Operator	MON-FRI: 0700 – 1500 SAT, SUN & PUB HOL 0800-1500
2.	Customs and immigration	MON-SUN: 0800-1500
3.	Health and sanitation	Available within AD Hours. 2 HR PN to AD required
4.	AIS briefing office	NIL
5.	ATS reporting office (ARO)	As AD Administration
6.	MET briefing office	As AD Administration
7.	ATS	TWR: MON-FRI: 0700-1500 SAT/SUN/Public Holidays: 0800-1500 APP: MON-FRI: 0500-1700

8.	<i>Fuelling</i>	As AD Administration
9.	<i>Handling</i>	As AD Administration
10.	<i>Security</i>	24 HR
11.	<i>De-icing</i>	NIL
12.	<i>Remarks</i>	<p>Outside AD HR, services are available O/R. Request to be submitted to the AD not later than 1100 UTC.</p> <p>NAMRA/Customs and Excise Contact Details Tel: +264 64 206 522 After Hour: +264 81 261 6596</p> <p>Home Affairs: Immigration Contact Details Tel: +264 81 951 0254 After Hour: +264 81 389 8137</p> <p>Aeronautical Information Services Contact Details (FYWE) Tel: +264 61 702 080/1/3 Fax: +264 61 702 088</p> <p>Meteorological Services Contact Details Tel: +264 64 702 685 After Hour: +264 81 247 6225</p> <p>Air Traffic Services Contact Details Tel: +264 64 702 2690/1 After Hour: +264 81 277 7918 and +264 81 308 1520</p> <p>Port Health Tel: +264 64 216 354 After Hour: +264 81 490 2035</p>

FYWB AD 2.4 HANDLING SERVICES AND FACILITIES

1.	<i>Cargo-handling facilities</i>	Hydraulic staircases, forklift 3 ton, air starter unit, 5 ton high loader, tractor, 5 ton scale, hangar parking, baggage trolleys cargo trailers, GPU, toilet services, vehicle (bakkie) & aircraft cleaning.
2.	<i>Fuel/oil types</i>	Jet A1 and AVGAS 100LL
3.	<i>Fuelling facilities/capacity</i>	1 x Jet A1 refuelling truck – 18 000 L 1 x Jet A1 refuelling truck – 11 000 L 1 x AVGAS refuelling truck – 3 000 L
4.	<i>De-icing facilities</i>	NIL
5.	<i>Hangar space for visiting aircraft</i>	Limited by prior arrangement only.
6.	<i>Repair facilities for visiting aircraft</i>	NIL
7.	<i>Remarks</i>	<p>Handling services available within AD HR or by arrangement with the AD.</p> <p>Walvis Bay Airport Services (WBAS) Tel: +264 64 201 2180/ +264 64 204 878</p>

3. SECURING OF LIGHT AIRCRAFT

There are no designated stands for the parking of small aircraft, pilots are strictly requested to adhere to the marshalling signals from the marshaller.

No aircraft mooring points are available at FYWB, aircraft mooring weights available:

The equipment available is listed below:

- 4 x 43 KG pairs;
- 4 x 90 KG pairs;
- 4 x 92 KG pairs;
- 4 x 115 KG
- 1 x mobile trolley (for transportation of mooring equipment only)

The mooring equipment are stored at the now defunct temporary passenger terminal building structure, on airside located west of the passenger terminal building.

Pilots requiring mooring weights shall inform the aircraft marshaller on duty at the apron or the Airport Rescue and Fire Fighting Services Control Room.

Note! – The Pilot in Command (PIC) shall at own discretion select the weights for the type of aircraft in operation at the time.

Once the mooring weights have been used, it is the responsibility of the aircraft operator to return the mooring weight equipment to the designated storage area.

4. LIMITATIONS ON THE USE OF THE AERODROME

Simultaneous Movements

The separation distance between the runway and the taxiway does not allow simultaneous movements of landing and taxiing aircraft.

Taxiway Restrictions

Taxiways Delta and Echo are closed permanently.

Standard taxiway routes exist for all aircraft above Code B through Taxiway Alpha 4 and onto Taxiway Bravo.

Passenger apron through Taxiway Charlie, adjacent to the passenger terminal building, is closed to traffic subject to prior approval from the Airport Manager.

Other Restrictions

No night operations, outside of natural light hours, are allowed at Walvis Bay International Airport.

Pre-Flight Altimeter Checkpoint

The apron at Walvis Bay International Airport is not provided with Pre-Flight Altimeter checkpoint(s). The pre-flight altimeter checks are currently conducted on any position on the Apron. Pilots obtain the QNH from ATC, which is obtained from the Pressure Sensor of Meteorological Services.

Apron Markings

Airport Apron lead in lines is not commensurate with aircraft operations. There are no aircraft stand markings on FYWB cargo or passenger apron. Pilots are to follow aircraft marshaller instructions.

FYWB AD 2.24 CHARTS RELATED TO WALVIS BAY

	Page
Aerodrome Chart – ICAO	AD 2-17
Area Chart – ICAO (Reserved)	AD 2-19
Instrument Approach Chart – ICAO	AD 2-21
Instrument Approach Chart – ICAO VOR RWY 09	AD 2-23
Data code FYWB VOR RWY 09	AD 2-24
Instrument Approach Chart – ICAO VOR RWY 27	AD 2-25
Data code FYWB VOR RWY 27	AD 2-26
Instrument Approach Chart – ICAO RNP RWY 09	AD 2-27
Data code FYWB RNP RWY 09	AD 2-28
Instrument Approach Chart – ICAO RNP RWY 27	AD 2-29
Data code FYWB RNP RWY 27	AD 2-30
CTR Chart	AD 2-31
VFR Entry/Exit points	AD 2-32
VFR Routes 1,2,3,4 Chart	AD 2-33
VFR Routes narrative	AD 2-34
Namib Naukluft Desert Special Rules Area	AD 2-35
Aerodrome Obstacle Chart – ICAO	AD 2-37

AERODROME CHART

22°58'48"S
014°38'43"E

ELEV 299 FT

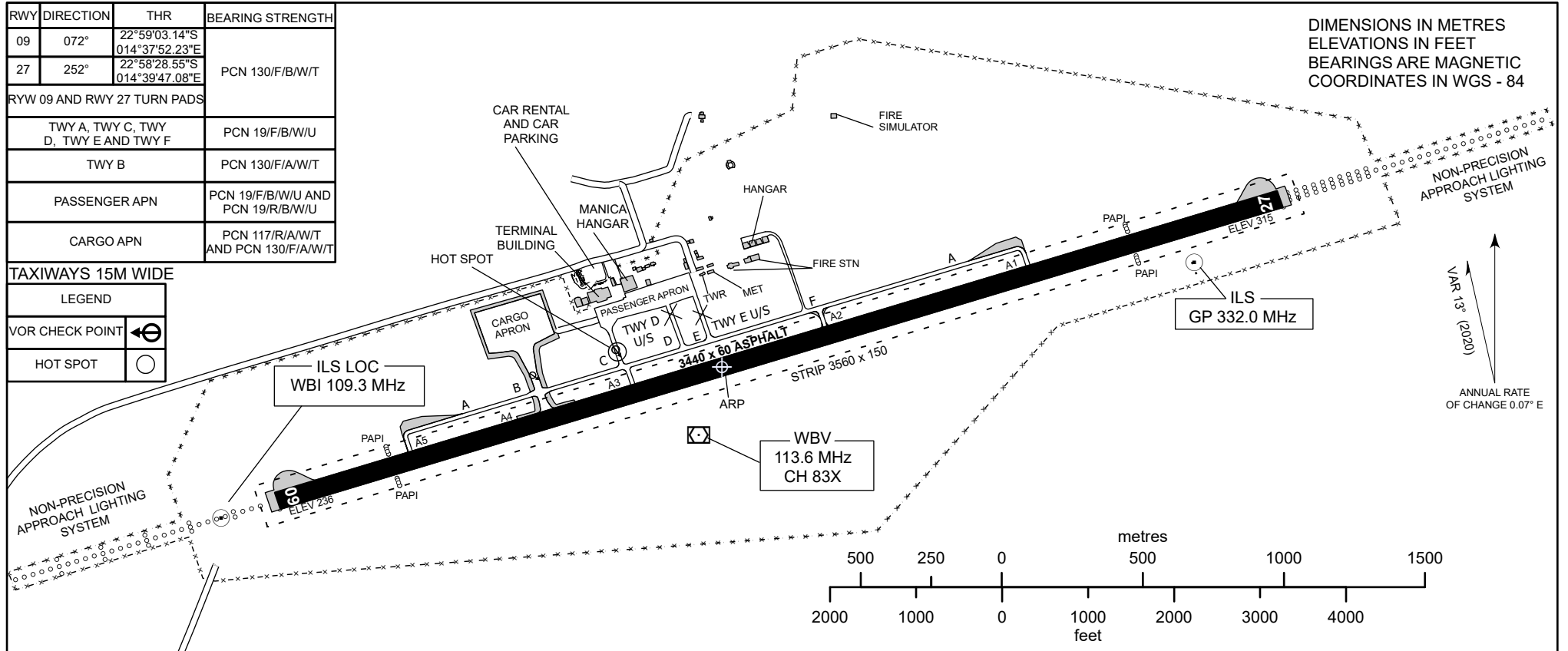
WALVIS BAY TWR 122.5
WALVIS BAY ATIS 127.0

WALVIS BAY/
WALVIS BAY INTERNATIONAL AIRPORT

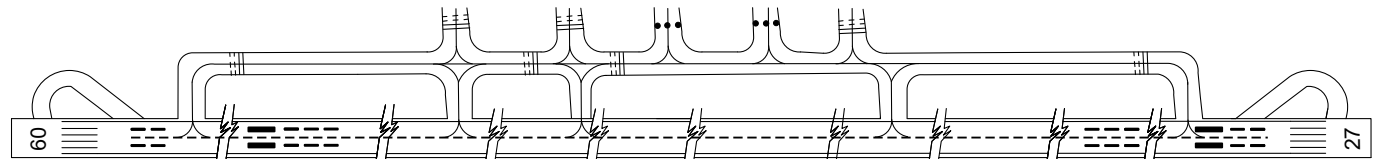
RWY	DIRECTION	THR	BEARING	STRENGTH
09	072°	22°59'03.14"S 014°37'52.23"E	PCN 130/F/B/W/T	
27	252°	22°58'28.55"S 014°39'47.08"E		
RYW 09 AND RWY 27 TURN PADS				
TWY A, TWY C, TWY D, TWY E AND TWY F			PCN 19/F/B/W/U	
TWY B			PCN 130/F/A/W/T	
PASSENGER APN			PCN 19/F/B/W/U AND PCN 19/R/B/W/U	
CARGO APN			PCN 117/R/A/W/T AND PCN 130/F/A/W/T	

TAXIWAYS 15M WIDE

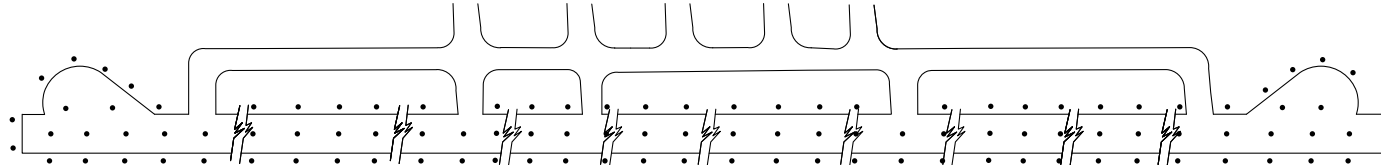
LEGEND	
VOR CHECK POINT	
HOT SPOT	



MARKING AIDS RWY 09/27 AND EXIT TWY



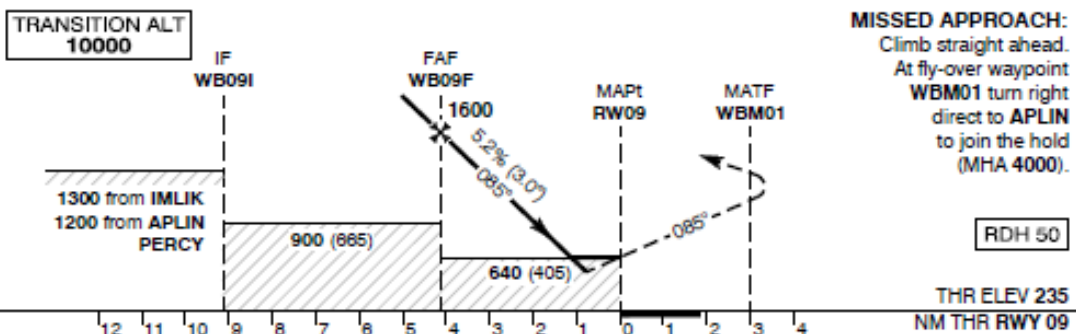
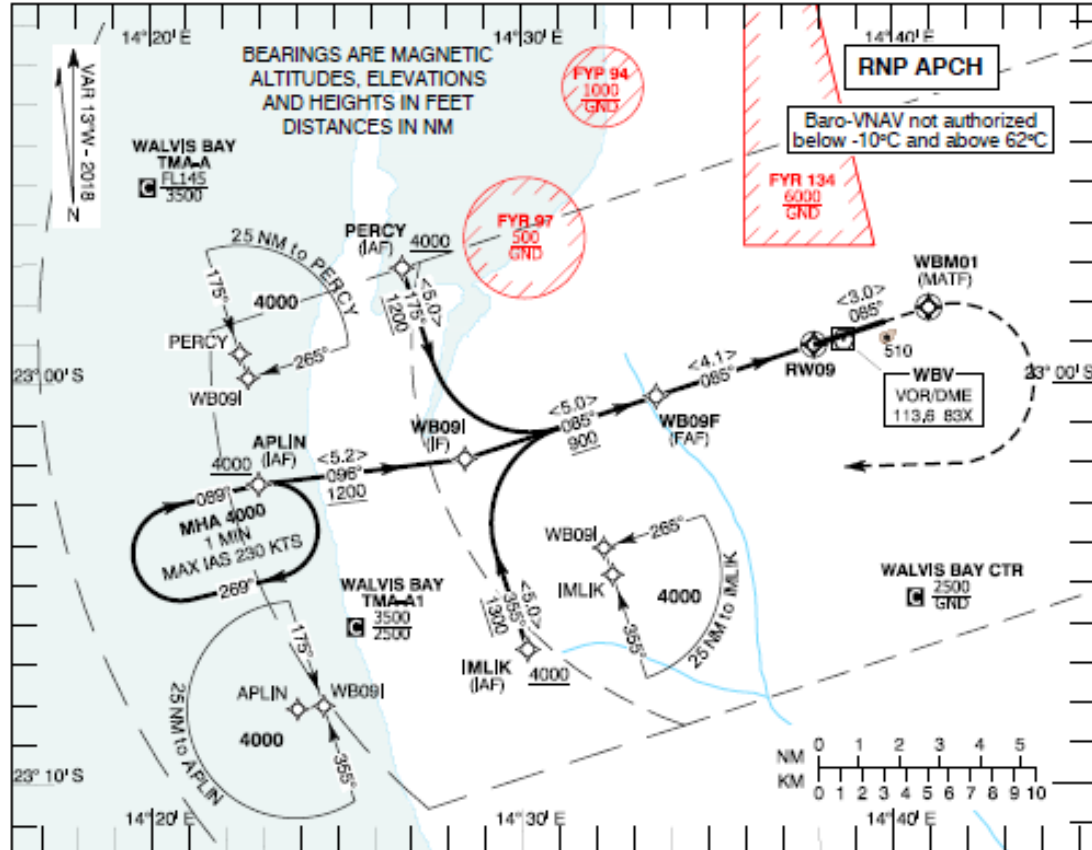
LIGHTING AIDS RWY 09/27 AND EXIT TWY



INTENTIONALLY LEFT BLANK

INSTRUMENT APPROACH CHART - ICAO **AERODROME ELEV - 299 FT** **HEIGHT RELATED TO THR RWY - 09 ELEV - 235 FT** **WALVIS BAY (FYWB) RNP RWY 09**

TWR 122.50
ATIS 127.00



Aircraft CAT		A	B	C	D	
MDA (OCH)	LNAV	640 (405) 1700				
	VIS	LNAV/VNAV	530 (295) 1200	540 (305) 1200	550 (315) 1200	560 (325) 1300
Distance to MAPt	NM	4	3	2		
Altitude	FT	1560 (1325)	1240 (1005)	920 (685)		
Ground Speed	KTS	80	100	120	140	160
Descent Rate (3.0°)	FT/MIN	425	530	635	745	850

NOTES:
1. MAX IAS 250 KTS at and below 10000.
2. Descent gradient greater than 5.8% (3.2°) from IMLIK and PERCY.

CHANGES: NEW

Serial #	Navigational performance	Path descriptor	Waypoint identifier	Waypoint coordinates	Fly-Over	True track [°] / Magnetic track [°]	Distance [nm]	Turn direction	Upper limit [ft] / Lower limit [ft]	Speed [kts]	VPA [°] / TCH [ft]	Remarks
1	RNP APCH	IF	IMLIK	23°06'39.14"S 014°30'08.09"E	-	-	-	-	- / 4000	-	-	IAF
2	RNP APCH	TF	WB09I	23°01'52.87"S 014°28'27.53"E	N	342.0 / 355	5.0	-	-	-	-	IF
3	RNP APCH	TF	WB09F	23°00'19.93"S 014°33'36.84"E	N	072.0 / 085	5.0	-	- / 1600	-	-	FAF
4	RNP APCH	TF	RW09	22°59'03.14"S 014°37'52.23"E	Y	072.0 / 085	4.1	-	-	-	3.00 / 50	-
5	RNP APCH	CF	WBM01	22°58'07.36"S 014°40'57.75"E	Y	072.0 / 085	-	-	-	-	-	WBV 082° / WBV D 2.3
6	RNP APCH	OF	APLIN	23°02'30.44"S 014°22'53.39"E	N	-	-	R	-	230	-	IAF

Serial #	Navigational performance	Path descriptor	Waypoint identifier	Waypoint coordinates	Fly-Over	True track [°] / Magnetic track [°]	Distance [nm]	Turn direction	Upper limit [ft] / Lower limit [ft]	Speed [kts]	VPA [°] / TCH [ft]	Remarks
1	RNP APCH	IF	APLIN	23°02'30.44"S 014°22'53.39"E	-	-	-	-	- / 4000	-	-	IAF
2	RNP APCH	TF	WB09I	23°01'52.87"S 014°28'27.53"E	N	083.1 / 096	5.2	-	-	-	-	IF
3	RNP APCH	TF	WB09F	23°00'19.93"S 014°33'36.84"E	N	072.0 / 085	5.0	-	- / 1600	-	-	FAF
4	RNP APCH	TF	RW09	22°59'03.14"S 014°37'52.23"E	Y	072.0 / 085	4.1	-	-	-	3.00 / 50	-
5	RNP APCH	CF	WBM01	22°58'07.36"S 014°40'57.75"E	Y	072.0 / 085	-	-	-	-	-	WBV 082° / WBV D 2.3
6	RNP APCH	OF	APLIN	23°02'30.44"S 014°22'53.39"E	N	-	-	R	-	230	-	IAF

Serial #	Navigational performance	Path descriptor	Waypoint identifier	Waypoint coordinates	Fly-Over	True track [°] / Magnetic track [°]	Distance [nm]	Turn direction	Upper limit [ft] / Lower limit [ft]	Speed [kts]	VPA [°] / TCH [ft]	Remarks
1	RNP APCH	IF	PERCY	22°57'06.57"S 014°26'47.08"E	-	-	-	-	- / 4000	-	-	IAF
2	RNP APCH	TF	WB09I	23°01'52.87"S 014°28'27.53"E	N	162.0 / 175	5.0	-	-	-	-	IF
3	RNP APCH	TF	WB09F	23°00'19.93"S 014°33'36.84"E	N	072.0 / 085	5.0	-	- / 1600	-	-	FAF
4	RNP APCH	TF	RW09	22°59'03.14"S 014°37'52.23"E	Y	072.0 / 085	4.1	-	-	-	3.00 / 50	-
5	RNP APCH	CF	WBM01	22°58'07.36"S 014°40'57.75"E	Y	072.0 / 085	-	-	-	-	-	WBV 082° / WBV D 2.3
6	RNP APCH	OF	APLIN	23°02'30.44"S 014°22'53.39"E	N	-	-	R	-	230	-	IAF

Hold Identification

Holding Fix	Latitude (N) / Longitude (W)	Inbound True Track (degrees)	Inbound Mag Track (degrees)	Maximum Indicated Airspeed (kts)	Minimum Holding Altitude / Level (FU ft)	Maximum Holding Altitude / Level (FU ft)	Distance outbound limit (NM) / Outbound time (mix)	Direction of Turn
APLIN	23°02'30.44"S / 014°22'53.39"E	076.0	089	230	4000	-	1 min	R

AERODROME OBSTACLE CHART-ICAO
TYPE A (OPERATING LIMITATIONS)

WALVIS BAY/ Walvis Bay Intl Airport

DIMENSIONS AND ELEVATIONS IN METRES

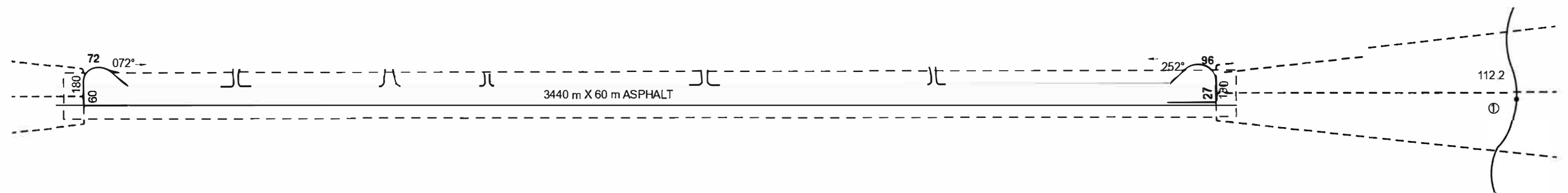
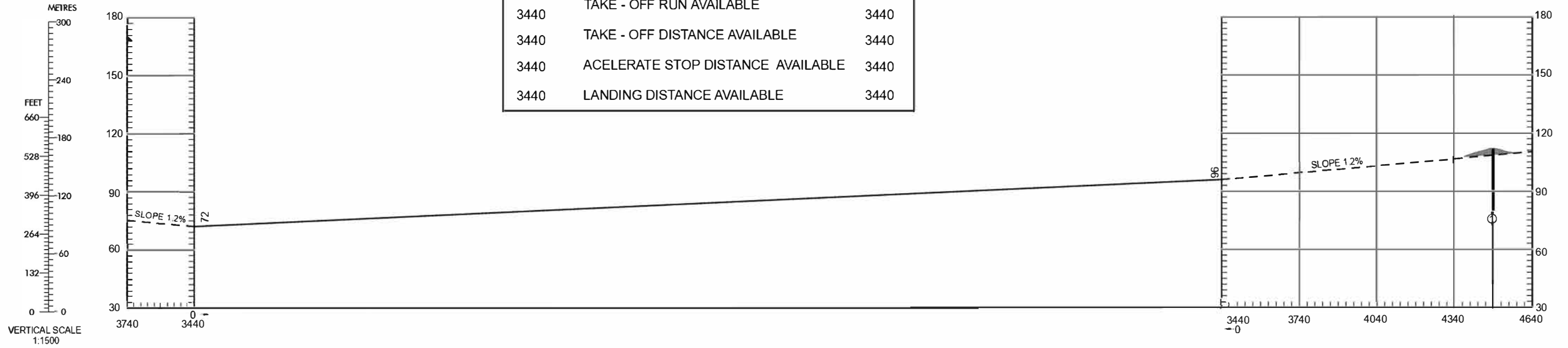
RWY 09 / 27

MAGNETIC VARIATION 13°W - JAN 2020

RWY 09 / 27

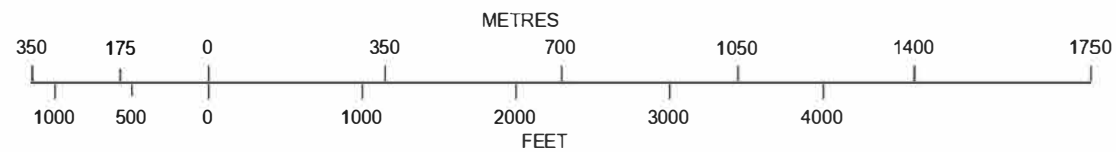
DECLARED DISTANCES

RWY 09		RWY 27
3440	TAKE - OFF RUN AVAILABLE	3440
3440	TAKE - OFF DISTANCE AVAILABLE	3440
3440	ACCELERATE STOP DISTANCE AVAILABLE	3440
3440	LANDING DISTANCE AVAILABLE	3440



HORIZONTAL SCALE 1 : 15000

LEGEND	
IDENTIFICATION NUMBER	①
TERRAIN CONTOUR	
TERRAIN PENETRATING OBSTACLE PLANE	



INTENTIONALLY LEFT BLANK