

AD 2. AERODROMES

FYOA AD 2.1 AERODROME LOCATION INDICATOR AND NAME

FYOA - Ondangwa Aerodrome

FYOA AD 2.2 AERODROME GEOGRAPHICAL AND ADMINISTRATIVE DATA

1.	<i>ARP coordinates and site at AD</i>	175238S 0155700E ARP site not established with the survey
2.	<i>Direction and distance from (city)</i>	N, 2 NM from Ondangwa
3.	<i>Elevation/reference temperature</i>	3 599 FT / 38 ° C
4.	<i>Geoid undulation at AD Elevation PSN</i>	21 M
5.	<i>MAG VAR/annual change</i>	7° W (2023)/ 0.15° decreasing
6.	<i>Name of AD operator, address, telephone, telefax numbers, email address, AFS address and, if available, website address.</i>	Namibia Airports Company Limited P.O Box 2649 Ondangwa AD Tel: +264 65 240476 Fax: +264 65 240534 AFS: FYOAYDYX
7.	<i>Types of traffic permitted (IFR/VFR)</i>	IFR/VFR
8.	<i>Remarks</i>	Public aerodrome Designated point of entry/exit

FYOA AD 2.3 OPERATIONAL HOURS

1.	<i>AD administration</i>	MON & WED: 0530 – 1500 TUE, THU, FRI & SUN: 0530 – 1600; SAT: CLSD
2.	<i>Customs and immigration</i>	MON-FRI: 0600 - 1500
3.	<i>Health and sanitation</i>	HS
4.	<i>AIS briefing office</i>	NIL
5.	<i>ATS reporting office (ARO)</i>	NIL
6.	<i>MET briefing office</i>	SUN-FRI: 0600 – 1500 SAT: CLSD
7.	<i>ATS</i>	As AD Administration
8.	<i>Fuelling</i>	As AD Administration
9.	<i>Handling</i>	NIL
10.	<i>Security</i>	H24
11.	<i>De-icing</i>	NIL
12.	<i>Remarks</i>	<p>Customs Contact Details Service Available on request during SAT & SUN at the following contact details: Tel: +264 65 22 9600 Mobile: +264 85 127 1999 / +264 81 208 5616</p> <p>Immigration contact details: Tel: +264 65 241669 Cell: +264 81 2501397 / + 264 81 3067996</p> <p>AIS contact details: Tel: +264 61 702080/1/3 Fax: +264 61 702088 Note: Briefing office only available in Windhoek</p> <p>Meteorological Services contact details: Tel: +264 65 240922</p> <p>Air Traffic Services contact details: ATC Tel: +264 65 703190/1 ATC Fax: +264 65 703199 AFS: FYOAZTZX</p> <p>Puma (Refuelling) Public holidays, after Hours and Weekends: On Request contact details Mobile: +264 81 129 3014/+264 81 259 4707 Tel: +264 65 241465 Fax: +264 65 241465</p>

4. Unserviceable Areas on the Apron due to surface deterioration

FYOA has portions of the Apron that is unserviceable and is demarcated with reflective cones.

5. Parking Area for small aircraft (General Aviation)

General aviation aircraft shall be guided by Marshalls to the parking area for small aircraft.

6. Parking Area for Helicopters

A designated parking area for Helicopters has not been established. All pilots will park the helicopter on the apron as directed by ATC.

7. Apron – Taxing during winter conditions

Not applicable

8. School and training flights — technical test flights — use of runways

Not applicable

9. Helicopter traffic — limitation

NIL

10. Removal of disabled aircraft from the runway

When an aircraft is disabled on a runway, it is the duty of the owner or user of such aircraft to have it removed as soon as possible. If a disabled aircraft is not removed from the runway as quickly as possible by the owner or user, the aircraft will be removed by the aerodrome operator at the owner's or user's expense.

FYOA AD 2.21 NOISE ABATEMENT PROCEDURES

Nil procedures

FYOA AD 2.22 FLIGHT PROCEDURES

Radio Communication Failure (RCF)

- a) Aircraft to join overhead the Aerodrome at 2000FT AGL
- b) Observe and join the Aerodrome TFC
- c) Make all turns to the left whenever possible
- d) Land as soon as possible and report to the ATC

FYOA AD 2.23 ADDITIONAL INFORMATION

Nil Information

FYOA AD 2.24 CHARTS RELATED TO ONDANGWA

	Page
Aerodrome Chart – ICAO – Reserved	AD 2-13
Instrument Approach Chart – Reserved	AD 2-15
Instrument Approach Chart – Reserved	AD 2-17
Instrument Approach Chart – ICAO RNP RWY 08	AD 2-19
Data Code RNP RWY 08	AD 2-20
Instrument Approach Chart – ICAO RNP RWY 26	AD 2-21
Data Code RNP RWY 26	AD 2-22

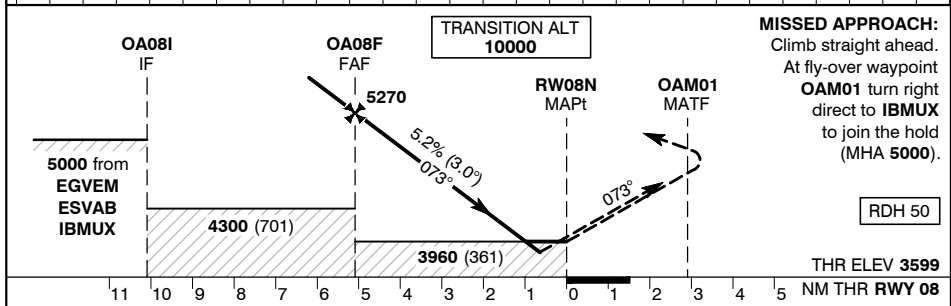
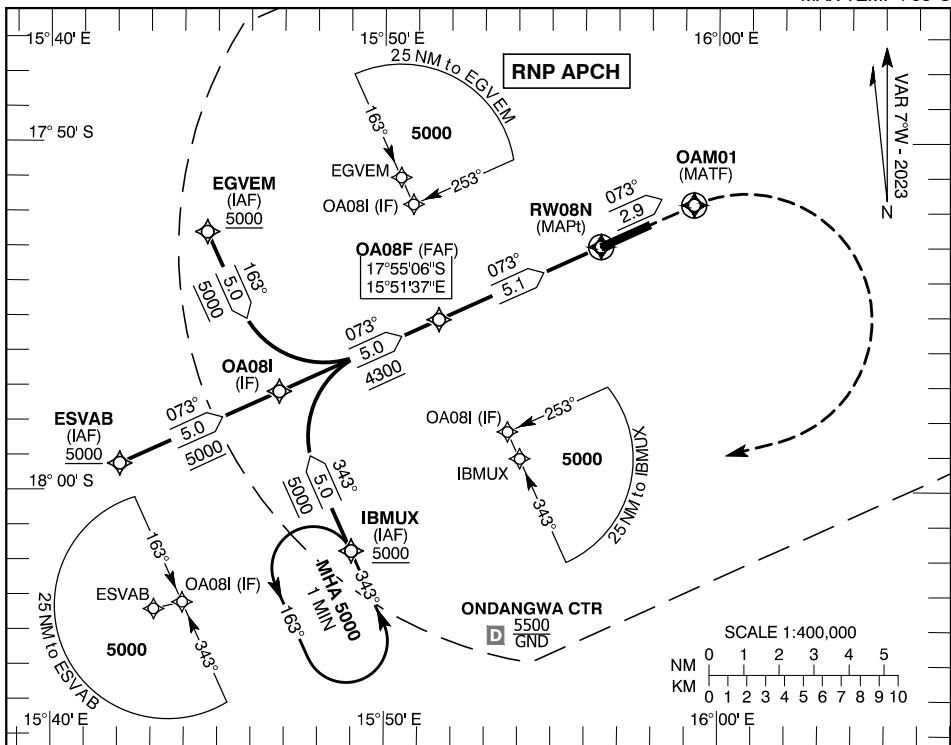
**INSTRUMENT
APPROACH
CHART - ICAO**

AERODROME ELEV - 3599 FT
HEIGHT RELATED TO
THR RWY - 08 ELEV - 3599 FT

APP 125.60
TWR 125.60

**Ondangwa (FYOA)
RNP RWY 08**
MNM TEMP -5°C
MAX TEMP +53°C

CHANGES: MAG VAR, MAX temp, TAA minimum, MAPt position, MAPt Bearings, LNAV/VNAV OCA, Initial & Intermediate MOCA, Initial WPT renamed.



MISSED APPROACH:
Climb straight ahead.
At fly-over waypoint
OAM01 turn right
direct to **IBMUX**
to join the hold
(MHA 5000).

RDH 50

Aircraft CAT		A	B	C	D	
OCA (H)	LNAV	3960 (361)				
	LNAV/VNAV	3850 (251)	3850 (251)	3860 (261)	3870 (271)	
Distance to THR	NM	5	4	3	2	1
Altitude	FT	5240 (1641)	4920 (1321)	4605 (1006)	4285 (686)	3970 (371)
Ground Speed	KTS	80	100	120	140	160
Descent Rate (3.0°)	FT/MIN	425	530	635	745	850

CAUTION:
Procedure commences outside controlled airspace.

NOTE:
1. Track shortening inside IAF not permitted.

**Bearings are magnetic.
Altitudes, Elevation and Heights in feet. Distances in NM.**

Serial #	Navigational performance	Path descriptor	Waypoint identifier	Waypoint coordinates	Fly-Over	True track / Magnetic track	Distance [nm]	Turn direction	Upper limit / Lower limit	Speed [kts]	VPA [°] / TCH [ft]	Remarks
1	RNP APCH	IF	IBMUX	18°01'44.9"S / 015°49'00.5"E	-	-	-	-	- / 5000	-	-	-
2	RNP APCH	TF	OA08I	17°57'10.6"S / 015°46'50.5"E	-	335.6 / 343	5.0	-	-	-	-	-
3	RNP APCH	TF	OA08F	17°55'06.3"S / 015°51'37.1"E	N	065.6 / 073	5.0	R	-	-	-	-
4	RNP APCH	TF	RW08N	17°52'59.7"S / 015°56'28.4"E	Y	065.6 / 073	5.1	-	-	-	3.00 / 50	-
5	RNP APCH	CF	OAM01	17°51'47.2"S / 015°59'15.4"E	Y	065.6 / 073	-	-	-	-	-	-
6	RNP APCH	DF	IBMUX	18°01'44.9"S / 015°49'00.5"E	N	-	-	R	-	-	-	-

Serial #	Navigational performance	Path descriptor	Waypoint identifier	Waypoint coordinates	Fly-Over	True track / Magnetic track	Distance [nm]	Turn direction	Upper limit / Lower limit	Speed [kts]	VPA [°] / TCH [ft]	Remarks
1	RNP APCH	IF	ESVAB	17°59'15.0"S / 015°42'03.8"E	-	-	-	-	- / 5000	-	-	-
2	RNP APCH	TF	OA08I	17°57'10.6"S / 015°46'50.5"E	-	065.6 / 073	5.0	-	-	-	-	-
3	RNP APCH	TF	OA08F	17°55'06.3"S / 015°51'37.1"E	N	065.6 / 073	5.0	-	-	-	-	-
4	RNP APCH	TF	RW08N	17°52'59.7"S / 015°56'28.4"E	Y	065.6 / 073	5.1	-	-	-	3.00 / 50	-
5	RNP APCH	CF	OAM01	17°51'47.2"S / 015°59'15.4"E	Y	065.6 / 073	-	-	-	-	-	-
6	RNP APCH	DF	IBMUX	18°01'44.9"S / 015°49'00.5"E	N	-	-	R	-	-	-	-

Serial #	Navigational performance	Path descriptor	Waypoint identifier	Waypoint coordinates	Fly-Over	True track / Magnetic track	Distance [nm]	Turn direction	Upper limit / Lower limit	Speed [kts]	VPA [°] / TCH [ft]	Remarks
1	RNP APCH	IF	EGVEM	17°52'36.3"S / 015°44'40.5"E	-	-	-	-	- / 5000	-	-	-
2	RNP APCH	TF	OA08I	17°57'10.6"S / 015°46'50.5"E	-	155.6 / 163	5.0	-	-	-	-	-
3	RNP APCH	TF	OA08F	17°55'06.3"S / 015°51'37.1"E	N	065.6 / 073	5.0	L	-	-	-	-
4	RNP APCH	TF	RW08N	17°52'59.7"S / 015°56'28.4"E	Y	065.6 / 073	5.1	-	-	-	3.00 / 50	-
5	RNP APCH	CF	OAM01	17°51'47.2"S / 015°59'15.4"E	Y	065.6 / 073	-	-	-	-	-	-
6	RNP APCH	DF	IBMUX	18°01'44.9"S / 015°49'00.5"E	N	-	-	R	-	-	-	-

Hold Identification

Holding Fix	Latitude (S) / Longitude (E)	Inbound True Track (degrees)	Inbound Mag Track (degrees)	Maximum Indicated Airspeed (kts)	Minimum Holding Altitude/ Level (FL/ft)	Maximum Holding Altitude/ Level (FL/ft)	Outbound time (min)	Direction of Turn
IBMUX	18°01'44.9"S / 015°49'00.5"E	335.6	343	250	5000	-	1	L

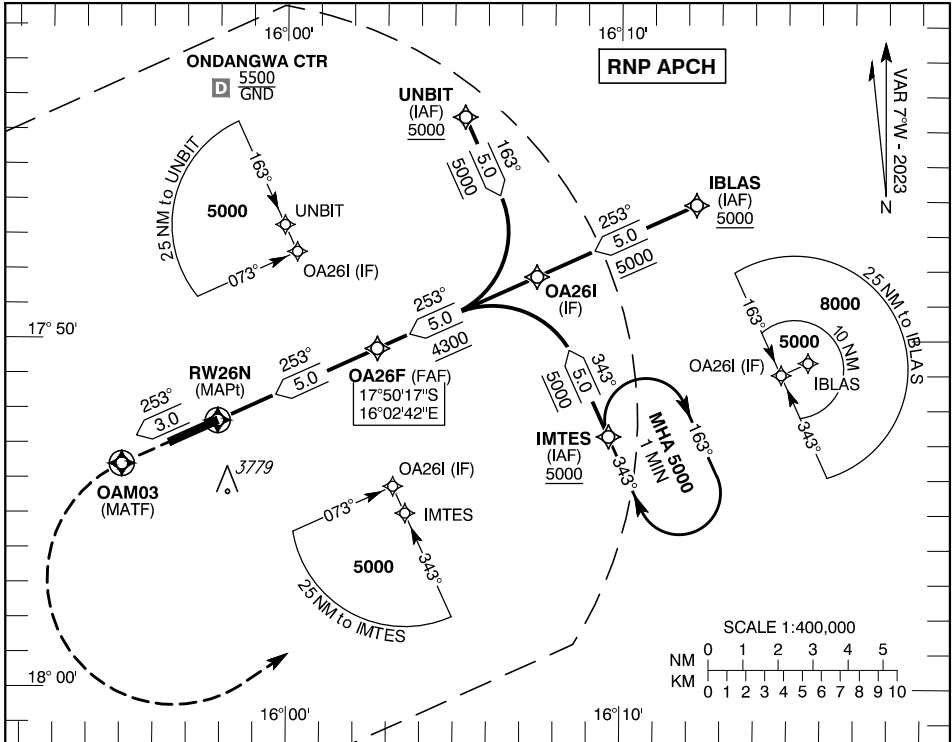
**INSTRUMENT
 APPROACH
 CHART - ICAO**

AERODROME ELEV - 3599 FT
 HEIGHT RELATED TO
 THR RWY - 26 ELEV - 3599 FT

APP 125.60
 TWR 125.60

**Ondangwa (FYOA)
 RNP RWY 26**
 MNM TEMP -5°C
 MAX TEMP +53°C

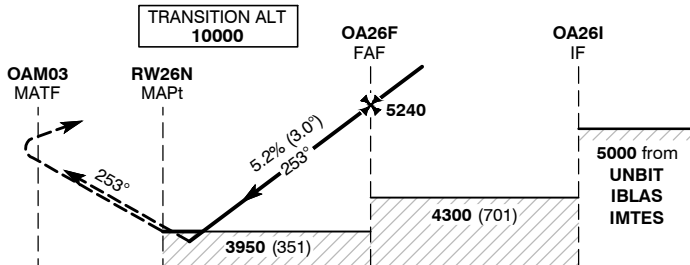
CHANGES: MAG VAR, MAX temp, TAA minimum, Bearings, LNAV & LNAV/VNAV OCA, All MOCAs, Initial WPT & MATF renamed.



MISSED APPROACH:

Climb straight ahead.
 At fly-over waypoint
OAM03 turn left
 direct to **IMTES**
 to join the hold
 (MHA 5000).

RDH 50



THR ELEV 3599

NM THR RWY 26

Aircraft CAT		A	B	C	D	
OCA (H)	LNAV	3950 (351)				
	LNAV/VNAV	3850 (251)	3860 (261)	3870 (271)	3870 (271)	
Distance to THR	NM	1	2	3	4	5
Altitude	FT	3970 (371)	4285 (686)	4605 (1006)	4925 (1326)	5240 (1641)
Ground Speed	KTS	80	100	120	140	160
Descent Rate (3.0°)	FT/MIN	425	530	635	745	850

CAUTION:

Procedure commences outside controlled airspace.

NOTE:

1. Track shortening inside IAF not permitted.

Bearings are magnetic.

Altitudes, Elevation and Heights in feet. Distances in NM.

Serial #	Navigational performance	Path descriptor	Waypoint identifier	Waypoint coordinates	Fly-Over	True track / Magnetic track	Distance [nm]	Turn direction	Upper limit / Lower limit	Speed [kts]	VPA [°] / TCH [ft]	Remarks
1	RNP APCH	IF	UNBIT	17°43'38.5"S / 016°05'18.5"E	-	-	-	-	- / 5000	-	-	-
2	RNP APCH	TF	OA26I	17°48'12.8"S / 016°07'28.3"E	-	155.6 / 163	5.0	-	-	-	-	-
3	RNP APCH	TF	OA26F	17°50'17.3"S / 016°02'41.9"E	N	245.6 / 253	5.0	R	-	-	-	-
4	RNP APCH	TF	RW26N	17°52'21.7"S / 015°57'55.7"E	Y	245.6 / 253	5.0	-	-	-	3.00 / 50	-
5	RNP APCH	CF	OAM03	17°53'36.5"S / 015°55'03.7"E	Y	245.6 / 253	-	-	-	-	-	-
6	RNP APCH	DF	IMTES	17°52'47.1"S / 016°09'38.2"E	N	-	-	L	-	-	-	-

Serial #	Navigational performance	Path descriptor	Waypoint identifier	Waypoint coordinates	Fly-Over	True track / Magnetic track	Distance [nm]	Turn direction	Upper limit / Lower limit	Speed [kts]	VPA [°] / TCH [ft]	Remarks
1	RNP APCH	IF	IBLAS	17°46'08.3"S / 016°12'14.6"E	-	-	-	-	- / 5000	-	-	-
2	RNP APCH	TF	OA26I	17°48'12.8"S / 016°07'28.3"E	-	245.6 / 253	5.0	-	-	-	-	-
3	RNP APCH	TF	OA26F	17°50'17.3"S / 016°02'41.9"E	N	245.6 / 253	5.0	-	-	-	-	-
4	RNP APCH	TF	RW26N	17°52'21.7"S / 015°57'55.7"E	Y	245.6 / 253	5.0	-	-	-	3.00 / 50	-
5	RNP APCH	CF	OAM03	17°53'36.5"S / 015°55'03.7"E	Y	245.6 / 253	-	-	-	-	-	-
6	RNP APCH	DF	IMTES	17°52'47.1"S / 016°09'38.2"E	N	-	-	L	-	-	-	-

Serial #	Navigational performance	Path descriptor	Waypoint identifier	Waypoint coordinates	Fly-Over	True track / Magnetic track	Distance [nm]	Turn direction	Upper limit / Lower limit	Speed [kts]	VPA [°] / TCH [ft]	Remarks
1	RNP APCH	IF	IMTES	17°52'47.1"S / 016°09'38.2"E	-	-	-	-	- / 5000	-	-	-
2	RNP APCH	TF	OA26I	17°48'12.8"S / 016°07'28.3"E	-	335.6 / 343	5.0	-	-	-	-	-
3	RNP APCH	TF	OA26F	17°50'17.3"S / 016°02'41.9"E	N	245.6 / 253	5.0	L	-	-	-	-
4	RNP APCH	TF	RW26N	17°52'21.7"S / 015°57'55.7"E	Y	245.6 / 253	5.0	-	-	-	3.00 / 50	-
5	RNP APCH	CF	OAM03	17°53'36.5"S / 015°55'03.7"E	Y	245.6 / 253	-	-	-	-	-	-
6	RNP APCH	DF	IMTES	17°52'47.1"S / 016°09'38.2"E	N	-	-	L	-	-	-	-

Hold Identification

Holding Fix	Latitude (S) / Longitude (E)	Inbound True Track (degrees)	Inbound Mag Track (degrees)	Maximum Indicated Airspeed (kts)	Minimum Holding Altitude/ Level (FL/ft)	Maximum Holding Altitude/ Level (FL/ft)	Outbound time (min)	Direction of Turn
IMTES	17°52'47.1"S / 016°09'38.2"E	335.6	343	250	5000	-	1	R