

FYWE AD 2.21 NOISE ABATEMENT PROCEDURES

1. Departure from RWY 01 shall maintain runway heading until passing 6500 feet before a turn is made or passing the State Hospital when departing from RWY 01.
 2. Traffic in the Eros circuit will remain west of the western bypass (when joining downwind for RWY 01/19).
 3. Simulated engine failure after take-off will be done overhead the David Hosea Merero Road.
 4. Bad weather circuits (training) will be kept to minimum and only between the hours of 08h00 (local) and 17h00 (local).
- Note:** *Deviations from the above-mentioned procedures are allowed for separation purposes and emergencies.*

FYWE AD 2.22 FLIGHT PROCEDURES

1. General

VFR aircraft approaching EROS via uncontrolled airspace shall plan to enter the CTR via the entry points and at the entry levels as published on the Visual Approach chart for EROS.

2. Procedures for IFR flights within Windhoek (Eros) CTR

RNP Approach Runway 01 for NCAA approved operators only.

3. Procedures within Eros CTR

3.1 Radar vectoring and sequencing

Nil facility.

3.2 Surveillance radar approaches

Nil facility.

3.3 Precision radar approach

Nil facility.

3.4 Communication failure

a) Squawk 7600

b) Phone +264 61 702090.

c) Enter CTR via Toni 8000FT. Proceed to overhead AD. Observe other traffic and make blind transmit.

d) Flash LDG lights and watch TWR for optical signals

4. Speed Restrictions

4.1 Speed restrictions within Eros CTR the following MAX IAS restrictions apply for arriving aircraft within the lateral and vertical confines of the EROS CTR:

For reciprocating engine powered aircraft: MAX IAS 150KT.

For turbine powered aircraft: MAX IAS 185KT. Speeds are mandatory and must be complied with. ATC may vary the speeds for traffic management.

4.2 Speed restriction within the Windhoek TMA for arriving and departing aircraft, MAX IAS 250KT restriction applies at and below FL150.

Speed is mandatory and must be complied with.

ATC may vary the speed for traffic management purposes.

FYWE AD 2.23 ADDITIONAL INFORMATION

1. Bird concentrations in the vicinity of the aerodrome

Large birds and flocks of pigeons in the vicinity of the aerodrome.

2. All flights by night to:

2.1 Depart RWY 01.

2.2 Land RWY 19.

3. Paragliding

NIL

4. Para-jump exercises over weekends.

FYWE AD 2.24 CHARTS RELATED TO WINDHOEK (EROS)

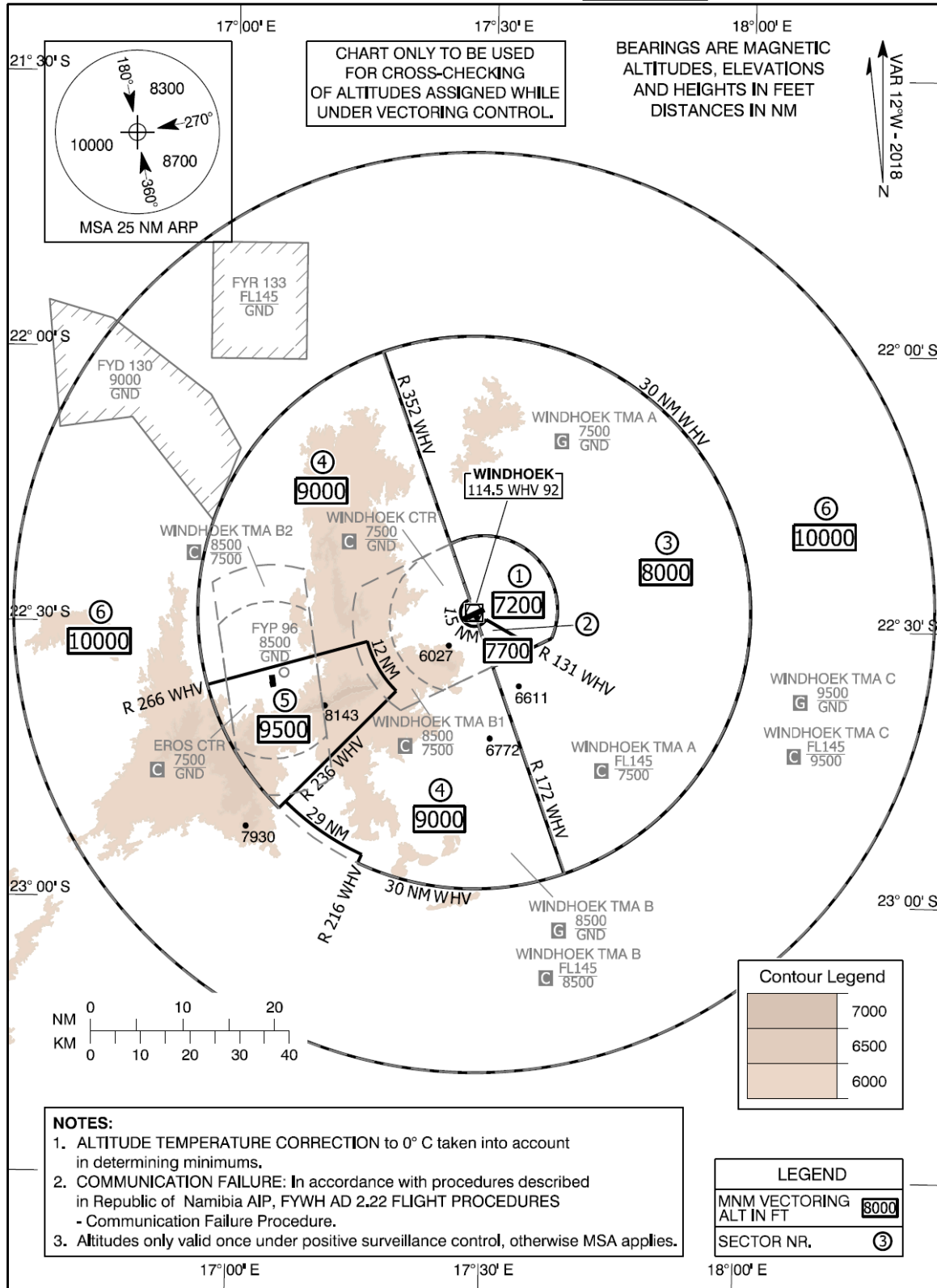
ICAO Charts		
No	Chart Type	Page No
1	Aerodrome Chart-ICAO	FYWE AD 2-15
2	ATC Surveillance Minimum Altitude Chart	FYWE AD 2-17
3	ATC Surveillance Minimum Coordinates	FYWE AD 2-18
4	Instrument Approach Chart – ICAO RNP RWY 01	FYWE AD 2-19
5	Instrument Approach Chart – ICAO RNP RWY 19	FYWE AD 2-21
6	Visual Approach Chart - ICAO	FYWE AD 2-23
7	Additional Information	FYWE AD 2-24
8	VFR Route 1 Chart - ICAO	FYWE AD 2-25
9	VFR Route 2 Chart - ICAO	FYWE AD 2-27

**ATC SURVEILLANCE
MINIMUM ALTITUDE
CHART - ICAO**

AERODROME ELEV - **5641 FT**
TRANSITION ALT - **10000 FT**

ATIS	126.20
APP	120.50
TWR	118.10
APN	125.90

**WINDHOEK EROS.
(FYWE)**



CHANGES: NEW

ATC Surveillance Minimum Altitude Coordinates

Sector 1. MNM ALT 7200 FT

22°21'11"S 017°25'19"E, 22°27'14"S 017°27'41"E,
arc 1.5 NM radius centre 22°28'39"S 017°28'14"E,
22°29'22"S 017°29'39"E, 22°32'16"S 017°35'17"E,
22°31'19"S 017°37'21"E,
arc 8 NM radius centre 22°28'17"S 017°29'21"E,
22°21'05"S 017°25'34"E, 22°21'11"S 017°25'19"E

Sector 2. MNM ALT 7700 FT

22°32'16"S 017°35'17"E, 22°29'22"S 017°29'39"E,
arc 1.5 NM radius centre 22°28'39"S 017°28'14"E,
22°30'03"S 017°28'47"E, 22°34'28"S 017°30'31"E,
22°32'16"S 017°35'17"E

Sector 3. MNM ALT 8000 FT

22°21'11"S 017°25'19"E, 22°00'21"S 017°17'12"E,
arc 30 NM radius centre 22°28'39"S 017°28'14"E,
22°56'55"S 017°39'21"E, 22°34'28"S 017°30'31"E,
22°31'19"S 017°37'21"E,
arc 8 NM radius centre 22°28'17"S 017°29'21"E,
22°21'05"S 017°25'34"E, 22°21'11"S 017°25'19"E

Sector 4. MNM ALT 9000 FT

22°00'21"S 017°17'12"E, 22°27'14"S 017°27'41"E,
arc 1.5 NM radius centre 22°28'39"S 017°28'14"E,
22°30'03"S 017°28'47"E, 22°56'55"S 017°39'21"E,
arc 30 NM radius centre 22°28'39"S 017°28'14"E,
22°56'07"S 017°15'01"E, 22°55'13"S 017°15'28"E,
arc 29 NM radius centre 22°28'39"S 017°28'14"E,
22°49'33"S 017°06'26"E, 22°37'18"S 017°19'14"E,
arc 12 NM radius centre 22°28'39"S 017°28'14"E,
22°31'57"S 017°15'47"E, 22°36'53"S 016°57'04"E,
arc 30 NM radius centre 22°28'39"S 017°28'14"E,
22°00'21"S 017°17'12"E

Sector 5. MNM ALT 9500 FT

22°36'53"S 016°57'04"E, 22°31'57"S 017°15'47"E,
arc 12 NM radius centre 22°28'39"S 017°28'14"E,
22°37'18"S 017°19'14"E, 22°50'16"S 017°05'41"E,
arc 30 NM radius centre 22°28'39"S 017°28'14"E,
22°36'53"S 016°57'04"E

Sector 6. MNM ALT 10000 FT

22°56'07"S 017°15'01"E,
arc 30 NM radius centre 22°28'39"S 017°28'14"E,
22°50'16"S 017°05'41"E, 22°49'33"S 017°06'26"E,
arc 29 NM radius centre 22°28'39"S 017°28'14"E,
22°55'13"S 017°15'28"E, 22°56'07"S 017°15'01"E
arc 50 NM radius centre 22°28'39"S 017°28'14"E