

AD 2. AERODROMES

FYOG AD 2.1 AERODROME LOCATION INDICATOR AND NAME

FYOG - Oranjemund Aerodrome

FYOG AD 2.2 AERODROME GEOGRAPHICAL AND ADMINISTRATIVE DATA

1.	ARP coordinates and site at AD	283505.3S 0162646.9E
2.	Direction and distance from (city)	SSE 2 NM from Oranjemund
3.	Elevation/reference temperature	13FT/NIL INFO AVBL
4.	Geoid undulation at AD ELEV PSN	32M
5.	MAG VAR/annual change	19°W (2023) /2°W
6.	AD administration, address, telephone, telefax, telex, AFS	CHF: Namdeb Diamond Corporation (Pty) Ltd. P O Box 35 Oranjemund Tel: +264 63 237 051 Telefax: +264 63 237 710 E-mail: travel@namdeb.com.na Telex: NIL AFS: NIL
7.	Types of traffic permitted (IFR/VFR)	IFR/VFR
8.	Remarks	1. Private aerodrome located in a restricted area. 2. 24 HR PPR and landing fees are charged. 3. Security Clearance is required for visiting the Town. Contact permit office at +264 63 236100 4. For landing permission, all operators are to contact Namdeb Travel Office at travel@namdeb.com or Tel +264 63 237051 or Fax +264 63 237710 5. All fees payable in cash. NIL credit card facilities. Note: No aircraft will be released unless all fees are paid.

FYOG AD 2.3 OPERATIONAL HOURS

1.	AD administration	MON-FRI BTN 0530-1100 & 1200-1430, Weekends and public HOL Closed.
2.	Customs and Immigration	Immigration PN: TEL: +264 63 232756 Fax: +264 63 234266 Fax-Email +264 88 628119 Customs: PN: TEL: +264 63 233552, Fax: +264 63 233483
3.	Health and sanitation	NIL

4.	<i>AIS briefing office</i>	NIL
5.	<i>ATS reporting office (ARO)</i>	NIL
6.	<i>MET briefing office</i>	NIL
7.	<i>ATS</i>	See AD 2.18
8.	<i>Fuelling</i>	PN, Mobile +264 81 2207422 & +264 81 1502478
9.	<i>Handling</i>	NIL
10.	<i>Security</i>	NIL
11.	<i>De-icing</i>	NIL
12.	<i>Remarks</i>	Night operations is for Emergencies only and PPR required.

FYOG AD 2.4 HANDLING SERVICES AND FACILITIES

1.	<i>Cargo-handling facilities</i>	NIL
2.	<i>Fuel/oil types</i>	Jet only, NIL AVGAS
3.	<i>Fuelling facilities/capacity</i>	<p>Southern Energy Company P.O Box 1228 Walvis Bay</p> <p>Refueller: Ruben Swartbooi Mobile: +264 81 771 5798 Office: +264 63 230006 Standby Cellphone: +264 81 1502478</p> <p>Controlling Office Tel: +264 64 203951 (office hours) Fax: +264 64 203984 Cell: +264 81 1429958 Email: ecbconsulting@outlook.com</p> <p>80 000 litres</p>
4.	<i>De-icing facilities</i>	NIL
5.	<i>Hangar space for visiting aircraft</i>	NIL
6.	<i>Repair facilities for visiting aircraft</i>	NIL
7.	<i>Remarks</i>	NIL

FYOG AD 2.5 PASSENGER FACILITIES

1.	<i>Hotels</i>	Guest houses – OMD telephone directory
2.	<i>Restaurants</i>	In town
3.	<i>Transportation</i>	NIL facilities
4.	<i>Medical facilities</i>	Hospital in town (+264 63 238000)
5.	<i>Bank and post office</i>	In town
6.	<i>Tourist office</i>	NIL facilities
7.	<i>Remarks</i>	PPR from Security before entry to Town area (+264-63-236100)

FYOG AD 2.19 RADIO NAVIGATION AND LANDING AIDS

Type of aid, CAT of ILS/MLS (for VOR/ILS/MLS give VAR)	ID	Frequency	Hours of Operation	Position of transmitting antenna co-ordinates	Elevation of DME transmitting antenna	Remarks
1	2	3	4	5	6	7
RNP APCH	N/A	1575.42 MHz	H24	N/A	N/A	Transmitting antennas are satellite based

FYOG AD 2.20 LOCAL TRAFFIC REGULATIONS

1. Aerodrome regulations

1.1 **Warning:** Blasting: Pilots are warned to avoid flying below 1500 FT along the coast between Oranjemund AD and Chamais Bay where blasting may take place at irregular intervals.

1.2 Occasional blasting on the northern bank of the Orange River from FYOG aerodrome to Sendelings Drift. Aircraft to remain clear of area and do not overfly less than 1500ft

1.3 **Navigation Warning:** Low level helicopter operations outside ATA operating on 124.8 MHZ. Doing ship service.

2. Taxiing to and from stands

NIL information available.

3. Parking area for small aircraft.

In front of the Terminal

4. Parking area for helicopters

NIL information available.

5. Apron - Taxiing during winter conditions

NIL information available.

6. Taxiing - Limitations

NIL information available.

7. School and training flights - Technical test flights - Use of runways

NIL information available

8. Helicopter traffic - Limitation

See AD 2.20 para 1, sub-para 1.3.

9. Removal of disabled aircraft from runways

Available

FYOG AD 2.21 NOISE ABATEMENT PROCEDURES

Avoid flights over Town

FYOG AD 2.22 FLIGHT PROCEDURES

Pilots are requested to avoid overflying the Ramsar Nature site from the Orange River mouth to the Border Bridge.

FYOG AD 2.23 ADDITIONAL INFORMATION

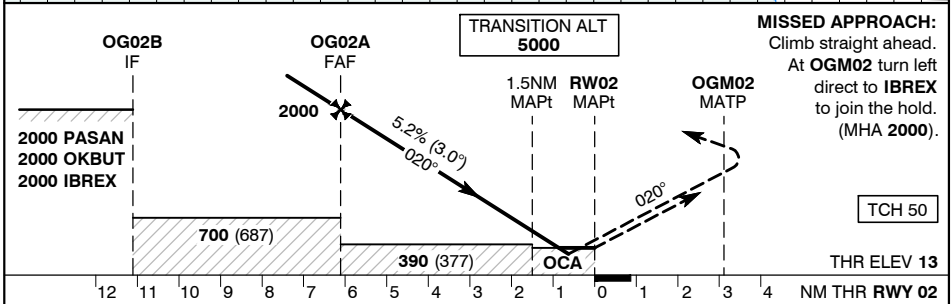
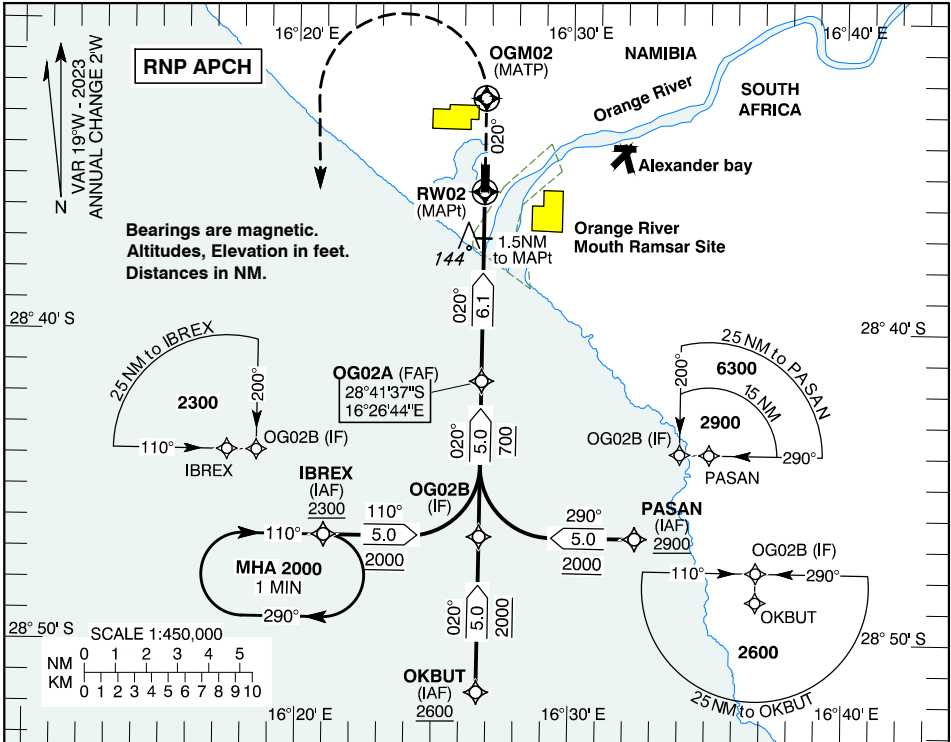
Sporadic large birds activities due to proximity to Riverine Ramsar site and Coastal Environment. Pilots to exercise Caution.

FYOG AD 2.24 CHARTS RELATED TO ORANJEMUND

Instrument Approach Chart – ICAO RNP RWY 02
Data Code - ICAO RNP RWY 02
Instrument Approach Chart – ICAO RNP RWY 20
Data Code – ICAO RNP RWY 20

Page
FYOG AD 2-9
FYOG AD 2-10
FYOG AD 2-11
FYOG AD 2-12

INSTRUMENT APPROACH CHART - ICAO **AERODROME ELEV - 13 FT** **Oranjemund (FYOG) RNP RWY 02**
 HEIGHT RELATED TO UNM 118.70
 THR RWY - 02 ELEV - 13 FT ATIS 127.15
 MNM TEMP -10°C
 MAX TEMP +60°C



Aircraft CAT		A		B		C	
OCA (H)	LNAV	340 (327)					
	LNAV/VNAV	270 (257)	270 (257)	270 (257)	270 (257)	280 (267)	280 (267)
Circling (Heights AAL)		640 (627)	640 (627)	740 (727)	740 (727)	960 (947)	960 (947)
Distance to MAPt	NM	6	5	4	3	2	1
Altitude	FT	1975 (1962)	1655 (1642)	1335 (1322)	1015 (1002)	700 (687)	380 (367)
Ground Speed	KTS	80	100	120	140	140	160
Descent Rate (3.0°)	FT/MIN	425	530	635	745	745	850

CAUTION:
 1. Sporadic large bird's activities.
 2. Avoid overflying the Ramsar Nature Site between the Orange River Mouth and the Border Bridge.

NOTE:
 1. Only attempt LNAV/VNAV app. once QNH is received from ATIS.

COMMUNICATION FAILURE PROCEDURE:
 Squawk 7600. Follow the Missed Approach Procedure to OGM02B. Enter the Hold at OGM02B. Hold for 5 mins, then complete the Approach.

CHANGES: New procedure.

Serial #	Navigational performance	Path descriptor	Waypoint identifier	Waypoint coordinates	Fly-Over	True track [°] / Magnetic track [°]	Distance [nm]	Turn direction	Upper limit [ft] / Lower limit [ft]	Speed [kts]	VPA [°] / TCH [ft]	Remarks
1	RNP APCH	IF	PASAN	284640.17S / 0163222.74E	-	-	-	-	- / 2900	-	-	-
2	RNP APCH	TF	OG02B	284638.19S / 0162641.35°E	N	270.4 / 290	5.0	-	- / 2000	-	-	-
3	RNP APCH	TF	OG02A	284137.41S / 0162643.73E	N	000.4 / 020	5.0	R	- / 700	-	-	-
4	RNP APCH	TF	RW02	283531.29S / 0162646.67E	Y	000.4 / 020	6.1	-	-	-	3.00 / 50	-
5	RNP APCH	CF	OGM02	283230.83S / 0162648.11E	Y	000.4 / 020	-	-	-	-	-	-
6	RNP APCH	DF	IBREX	284635.97S / 0162059.97E	N	-	-	L	- / 2000	-	-	-

Serial #	Navigational performance	Path descriptor	Waypoint identifier	Waypoint coordinates	Fly-Over	True track [°] / Magnetic track [°]	Distance [nm]	Turn direction	Upper limit [ft] / Lower limit [ft]	Speed [kts]	VPA [°] / TCH [ft]	Remarks
1	RNP APCH	IF	OKBUT	285138.96S / 0162638.96E	-	-	-	-	- / 2600	-	-	-
2	RNP APCH	TF	OG02B	284638.19S / 0162641.35E	N	000.4 / 020	5.0	-	- / 2000	-	-	-
3	RNP APCH	TF	OG02A	284137.41S / 0162643.73E	N	000.4 / 020	5.0	-	- / 700	-	-	-
4	RNP APCH	TF	RW02	283531.29S / 0162646.67E	Y	000.4 / 020	6.1	-	-	-	3.00 / 50	-
5	RNP APCH	CF	OGM02	283230.83S / 0162648.11E	Y	000.4 / 020	-	-	-	-	-	-
6	RNP APCH	DF	IBREX	284635.97S / 0162059.97E	N	-	-	L	- / 2000	-	-	-

Serial #	Navigational performance	Path descriptor	Waypoint identifier	Waypoint coordinates	Fly-Over	True track [°] / Magnetic track [°]	Distance [nm]	Turn direction	Upper limit [ft] / Lower limit [ft]	Speed [kts]	VPA [°] / TCH [ft]	Remarks
1	RNP APCH	IF	IBREX	284635.97S / 0162059.97E	-	-	-	-	- / 2300	-	-	-
2	RNP APCH	TF	OG02B	284638.19S / 0162641.35E	N	090.4 / 110	5.0	-	- / 2000	-	-	-
3	RNP APCH	TF	OG02A	284137.41S / 0162643.73E	N	000.4 / 020	5.0	L	- / 700	-	-	-
4	RNP APCH	TF	RW02	283531.29S / 0162646.67E	Y	000.4 / 020	6.1	-	-	-	3.00 / 50	-
5	RNP APCH	CF	OGM02	283230.83S / 0162648.11E	Y	000.4 / 020	-	-	-	-	-	-
6	RNP APCH	DF	IBREX	284635.97S / 0162059.97E	N	-	-	L	- / 2000	-	-	-

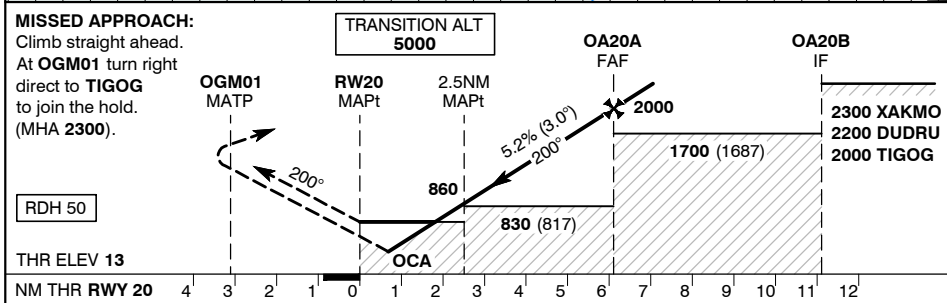
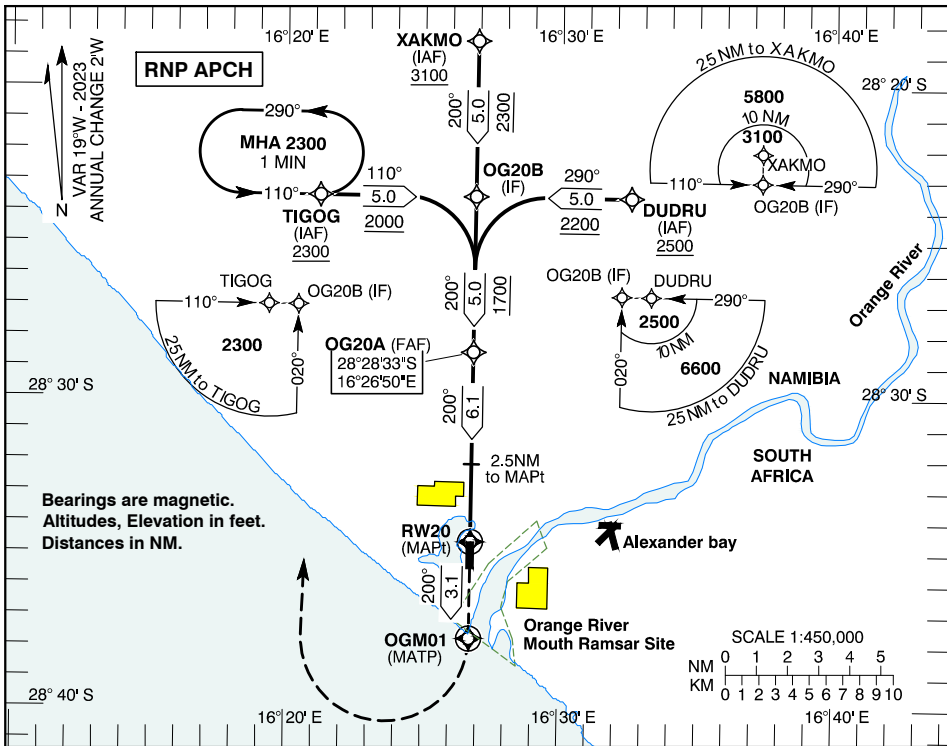
Hold Identification

Holding Fix	Latitude (N) / Longitude (W)	Inbound True Track (degrees)	Inbound Mag Track (degrees)	Maximum Indicated Airspeed (kts)	Minimum Holding Altitude/ Level (FL/ft)	Maximum Holding Altitude/ Level (FL/ft)	Outbound time (min)	Direction of Turn
IBREX	284635.97S / 0162059.97E	090.5	110	-	2000	-	1	R

INSTRUMENT AERODROME ELEV - 13 FT
APPROACH HEIGHT RELATED TO
CHART - ICAO THR RWY - 20 ELEV - 13 FT

UNM 118.70
 ATIS 127.15

Oranjemund (FYOG)
RNP RWY 20
 MNM TEMP -10°C
 MAX TEMP +60°C



		A		B		C	
OCA (H)	LNAV	640 (627)					
	LNAV/VNAV	290 (277)	300 (287)	310 (297)			
Circling (Heights AAL)		640 (627)	740 (727)	960 (947)			
Distance to MAPt	NM	2	3	4	5	6	
Altitude	FT	700 (687)	1020 (1007)	1335 (1322)	1655 (1642)	1975 (1962)	
Ground Speed	KTS	80	100	120	140	160	
Descent Rate (3.0°)	FT/MIN	425	530	635	745	850	

CAUTION:
 1. Sporadic large bird's activities.
 2. Avoid overflying the Ramsar Nature Site between the Orange River Mouth and the Border Bridge.

NOTE:
 1. Only attempt LNAV/VNAV app. once QNH is received from ATIS.

COMMUNICATION FAILURE PROCEDURE:
 Squawk 7600. Follow the Missed Approach Procedure to TIGOG. Enter the Hold at TIGOG. Hold for 5 mins, then complete the Approach.

CHANGES: New procedure.

Serial #	Navigational performance	Path descriptor	Waypoint identifier	Waypoint coordinates	Fly-Over	True track [°] / Magnetic track [°]	Distance [nm]	Turn direction	Upper limit [ft] / Lower limit [ft]	Speed [kts]	VPA [°] / TCH [ft]	Remarks
1	RNP APCH	IF	TIGOG	282330.24S / 0162112.28E	-	-	-	-	- / 2300	-	-	-
2	RNP APCH	TF	OG20B	282332.45S / 0162652.42E	N	090.4 / 110	5.0	-	- / 2000	-	-	-
3	RNP APCH	TF	OG20A	282833.24S / 0162650.04E	N	180.4 / 200	5.0	R	- / 1700	-	-	-
4	RNP APCH	TF	RW20	283439.33S / 0162647.12E	Y	180.4 / 200	6.1	-	-	-	3.00 / 50	-
5	RNP APCH	CF	OGM01	283745.81S / 016245.62E	Y	180.4 / 200	-	-	-	-	-	-
6	RNP APCH	DF	TIGOG	282330.24S / 016212.28E	N	-	-	R	- / 2300	-	-	-

Serial #	Navigational performance	Path descriptor	Waypoint identifier	Waypoint coordinates	Fly-Over	True track [°] / Magnetic track [°]	Distance [nm]	Turn direction	Upper limit [ft] / Lower limit [ft]	Speed [kts]	VPA [°] / TCH [ft]	Remarks
1	RNP APCH	IF	XAKMO	281831.66S / 016254.79E	-	-	-	-	- / 3100	-	-	-
2	RNP APCH	TF	OG20B	282332.45S / 0162652.42E	N	180.4 / 200	5.0	-	- / 2300	-	-	-
3	RNP APCH	TF	OG20A	282833.24S / 0162650.04E	N	180.4 / 200	5.0	-	- / 1700	-	-	-
4	RNP APCH	TF	RW20	283439.33S / 0162647.12E	Y	180.4 / 200	6.1	-	-	-	3.00 / 50	-
5	RNP APCH	CF	OGM01	283745.81S / 0162645.62E	Y	180.4 / 200	-	-	-	-	-	-
6	RNP APCH	DF	TIGOG	282330.24S / 0162112.28E	N	-	-	R	- / 2300	-	-	-

Serial #	Navigational performance	Path descriptor	Waypoint identifier	Waypoint coordinates	Fly-Over	True track [°] / Magnetic track [°]	Distance [nm]	Turn direction	Upper limit [ft] / Lower limit [ft]	Speed [kts]	VPA [°] / TCH [ft]	Remarks
1	RNP APCH	IF	DUDRU	282334.44S / 0163232.56E	-	-	-	-	- / 2500	-	-	-
2	RNP APCH	TF	OG20B	282332.45S / 0162652.42E	N	270.4 / 290	5.0	-	- / 2200	-	-	-
3	RNP APCH	TF	OG20A	282833.24S / 0162650.04E	N	180.4 / 200	5.0	L	- / 1700	-	-	-
4	RNP APCH	TF	RW20	283439.33S / 0162647.12E	Y	180.4 / 200	6.1	-	-	-	3.00 / 50	-
5	RNP APCH	CF	OGM01	283745.81S / 0162645.62E	Y	180.4 / 200	-	-	-	-	-	-
6	RNP APCH	DF	TIGOG	282330.24S / 0162112.28E	N	-	-	R	- / 2300	-	-	-

Hold Identification – AD 2-11

Holding Fix	Latitude (N) / Longitude (W)	Inbound True Track (degrees)	Inbound Mag Track (degrees)	Maximum Indicated Airspeed (kts)	Minimum Holding Altitude/ Level (FL/ft)	Maximum Holding Altitude/ Level (FL/ft)	Outbound time (min)	Direction of Turn
TIGOG	282330.24S / 0162112.28E	090.5	110	-	2300	-	1	L