

## AD 2. AERODROMES

### FYKM AD 2.1 AERODROME LOCATION INDICATOR AND NAME

FYKM - Katima Mulilo Aerodrome

### FYKM AD 2.2 AERODROME GEOGRAPHICAL AND ADMINISTRATIVE DATA

1.	ARP co-ordinates and site at AD	173803S 0241036E
2.	Direction and distance from (city)	SW 11 NM from Katima Mulilo
3.	Elevation/reference temperature	3144 FT/958.2 M
4.	MAG VAR/annual change	8° W (2025)/ 0.05° decreasing
5.	AD administration, address, telephone, telefax, telex, AFS	Namibia Airports Company Limited P.O. Box 23061 Windhoek Namibia  AD Tel: +264 66 250211 Telefax: +264 66 250212 ATC. Tel: +264 66 250202/3 Controlling AD: +264 61 295 55500 Fax: +264 61 295 55600 E-mail: <a href="mailto:sinvulab@airports.com.na">sinvulab@airports.com.na</a>  Telex: Nil info available AFS: Nil info available
6.	Types of traffic permitted (IFR/VFR)	IFR/VFR
7.	Remarks	Public aerodrome, designated port of entry/exit

### FYKM AD 2.3 OPERATIONAL HOURS

1.	AD administration	MON – FRI & SUN: 0600 – 1500 SAT: CLOSED
2.	Customs and immigration	Customs: +264-66-250200 Immigration: +264-66-250200  24 HR prior notice required.
3.	Health and sanitation	Nil facilities
4.	AIS briefing office	Nil
5.	ATS reporting office (ARO)	Refer number 7.
6.	MET briefing office	Nil facilities

7.	ATS	ATC HOD MON – FRI: 0600 - 1030 and 1100 - 1400 SAT: NIL SUN: 0700 - 1300.
8.	Fuelling	MON – FRI: 0600 - 1500 SAT, SUN, and Public HOL: Call out
9.	Handling	Nil facilities
10.	Security	24 HR
11.	De-icing	Nil facilities
12.	Remarks	Except in the case of emergency or with prior permission no ACFT may take off or land outside AD HOD

### FYKM AD 2.4 HANDLING SERVICES AND FACILITIES

1.	Cargo-handling facilities	Nil facilities
2.	Fuel/oil types	AVGAS and Jet A1 available
3.	Fuelling facilities/capacity	Southern Energy Company P.O Box 1228 Walvis Bay Tel/Fax: +264 66 250210  Refueller: Vistronel Mabuki: +264 81 4807772 Chaze Mukulumui: +264 81 275 7649 Office: +264 66 250 210 <b>Controlling Office</b> Tel: +264 64 203951 / 203984 (office hours) +264 81 122 7019 (After hours) Fax: +264 64 203984 Cell: +264 81 149 0114 Email: <a href="mailto:sharonb@sec.com.na">sharonb@sec.com.na</a> 7 000 Litre Jet A1 Isotainer 10 000 Litre Jet A1 Torpedo 30 000 Litre Jet A1 bulk underground tank 23 000 Litre AVGAS bulk underground tank
4.	De-icing facilities	Nil facilities
5.	Hangar space for visiting aircraft	1 Hangar
6.	Repair facilities for visiting aircraft	Nil facilities
7.	Remarks	Nil

### FYKM AD 2.18 ATS COMMUNICATION FACILITIES

<i>Service designation</i>	<i>Call sign</i>	<i>Frequency</i>	<i>Hours of operation</i>	<i>Remarks</i>
<b>1</b>	<b>2</b>	<b>3</b>	<b>4</b>	<b>5</b>
Tower/FIS	Katima Tower	a) 125.6 MHz	SUN-FRI: 0400-1600 SAT: Nil Or as per NOTAM	Aircraft are to transmit on TIBA outside these hours

### FYKM AD 2.19 RADIO NAVIGATION AND LANDING AIDS

<i>Type of aid, CAT of ILS/MLS (for VOR/ILS/MLS give VAR)</i>	<i>ID</i>	<i>Frequency</i>	<i>Hours of Operation</i>	<i>Position of transmitting antenna coordinates</i>	<i>Elevation of DME transmitting antenna</i>	<i>Remarks</i>
<b>1</b>	<b>2</b>	<b>3</b>	<b>4</b>	<b>5</b>	<b>6</b>	<b>7</b>
RNP APCH	N/A	1575.42 MHz	H24	N/A	N/A	Transmitting antennas are satellite based

### FYKM AD 2.20 LOCAL TRAFFIC REGULATIONS

- |   |  |
|---|--|
| <p><b>1. Aerodrome regulations</b></p> <p>1.1 Circuit altitude</p> <p>a) Turbine-powered aircraft 5000FT ALT</p> <p>b) Reciprocating engine powered aircraft 4500FT ALT</p> <p>c) RTF communication failure 5500FT ALT</p> <p>1.2 Right hand circuit on RWY 09 and left hand circuit on RWY 27 due to training area N of AP.</p> <p>1.3 All pilots operating at Katima Mulilo aerodrome must wear a lime green reflective jacket depicting their airlines concerned on the rear of the jacket for safety reasons as well as easy identification</p> <p><b>2. Taxiing to and from stands</b></p> <p>ACFT must backtrack and use RWY-TWY intersection abeam old ATC tower only – former full length parallel taxiways and intersections permanently closed.</p> <p><b>3. Parking area for small aircraft (general</b></p> | <p>aviation)</p> <p>Nil limits.</p> <p><b>4. Parking area for helicopters</b></p> <p>Apron.</p> <p><b>5. Apron - Taxiing during winter conditions</b></p> <p>Nil limits.</p> <p><b>6. Taxiing - Limitations</b></p> <p>Nil limits.</p> <p><b>7. School and training flights - Technical test flights - Use of runways</b></p> <p>Nil training.</p> <p><b>8. Helicopter traffic - Limitation</b></p> <p>Nil limits.</p> <p><b>9. Removal of disabled aircraft from runways</b></p> <p>Nil facilities.</p> |
|---|--|

## **FYKM AD 2.21 NOISE ABATEMENT PROCEDURES**

Nil procedures.

## **FYKM AD 2.22 FLIGHT PROCEDURES**

Radio Communication Failure (RCF)

- a) Aircraft to join overhead the Aerodrome at 2000FT AGL
- b) Observe and join the Aerodrome TFC
- c) Make all turns to the left whenever possible
- d) Land as soon as possible and report to the ATC

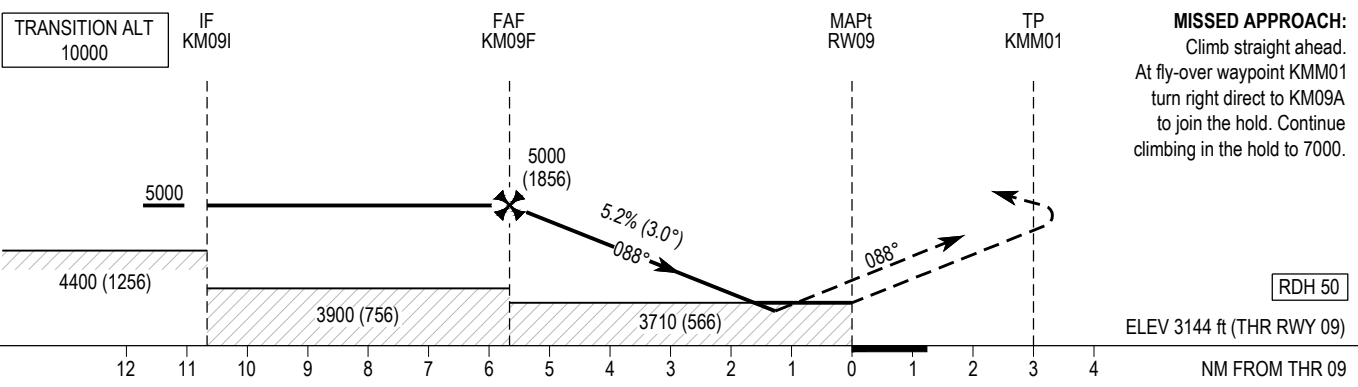
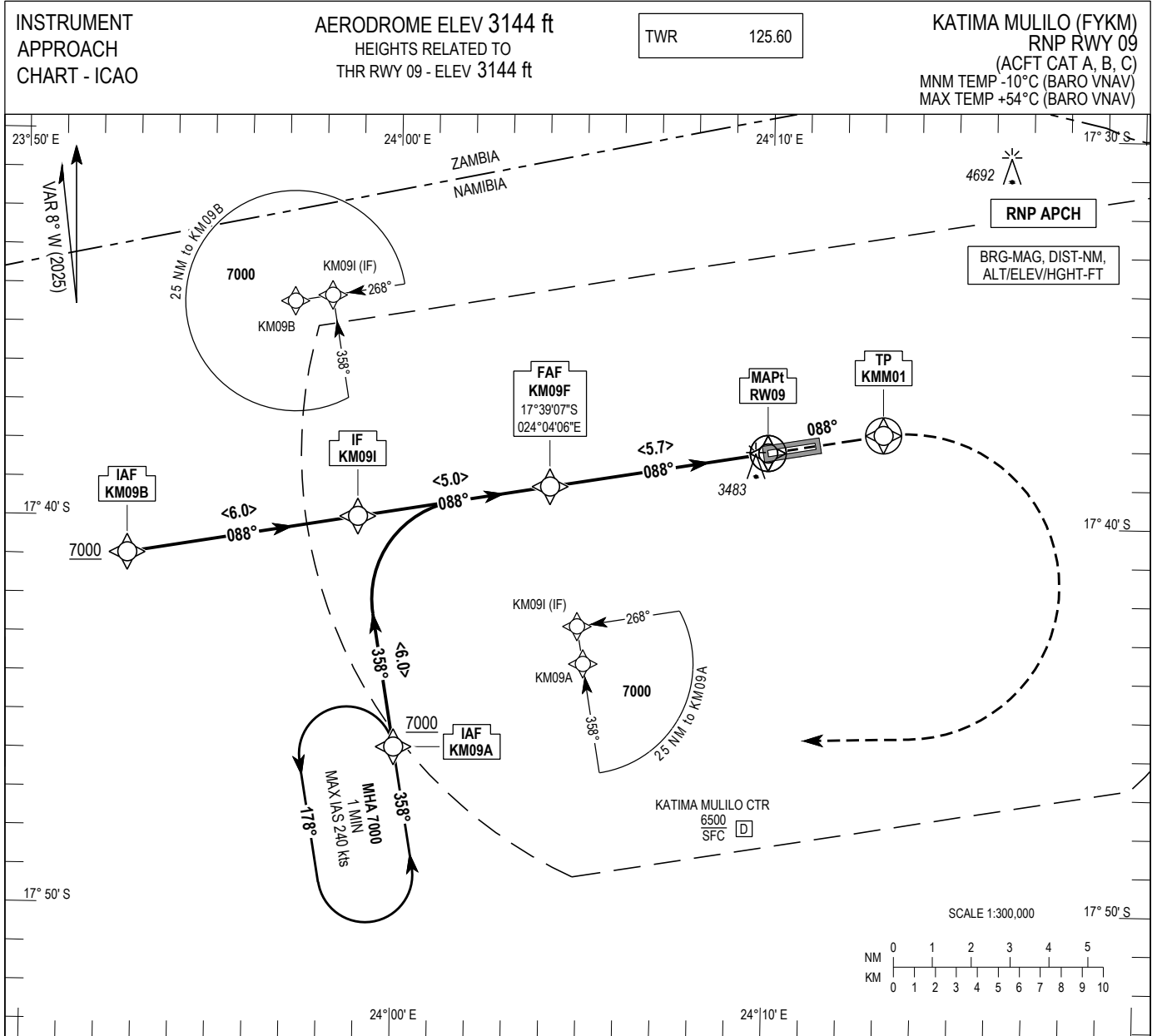
All aircraft departing RWY27 to maintain runway until passing 4500 FT ALT or 5 NM. All aircraft landing RWY09 to be established on final approach at 5 NM, 4500 FT ALT or higher.

## **FYKM AD 2.23 ADDITIONAL INFORMATION**

Nil.

## **FYKM AD 2.24 CHARTS RELATED TO KATIMA MULILO AERODROME**

	Page
Aerodrome Chart – ICAO Reserved	AD 2-9
Instrument Approach Chart – ICAO RNP RWY 09	AD 2-11
Data Code RNP RWY 09	AD 2-12
Instrument Approach Chart – ICAO RNP RWY 27	AD 2-13
Data Code RNP RWY 27	AD 2-14



TRANSITION ALT 10000	IF KM09I	FAF KM09F	MAPt RW09	TP KMM01
				<b>MISSED APPROACH:</b> Climb straight ahead. At fly-over waypoint KMM01 turn right direct to KM09A to join the hold. Continue climbing in the hold to 7000.
				RDH 50 ELEV 3144 ft (THR RWY 09)
<b>OCA (H)</b>	<b>A</b>	<b>B</b>	<b>C</b>	
LNAV	3710 (566)			
LNAV/VNAV	3600 (456)	3610 (466)	3630 (486)	
Visual Manoeuvring South of RWY (Heights AAL)	3780 (636)		3880 (736)	
Circling to the North Prohibited				

**NOTES:**

- Right hand circuits on RWY 09 and Left hand circuits on RWY 27 due training area North of RWY.
- Visual segment penetrated - Vegetation (Short final).

Recommended LNAV Profile on Final Approach

DIST THR RWY 09	5	4	3	2
ALT / HT (ft)	4790 (1646)	4470 (1326)	4150 (1006)	3830 (686)
Ground Speed	fts	80	100	120
	fts	140	160	
Descent rate gradient - 5.2% (3.0°) 320 ft/NM	ft / min	430	530	640
		740	850	

CHANGE: B-VNAV OCA (H) Cat A, B; Note: MA text.

**RNP RWY09 via KM09A**

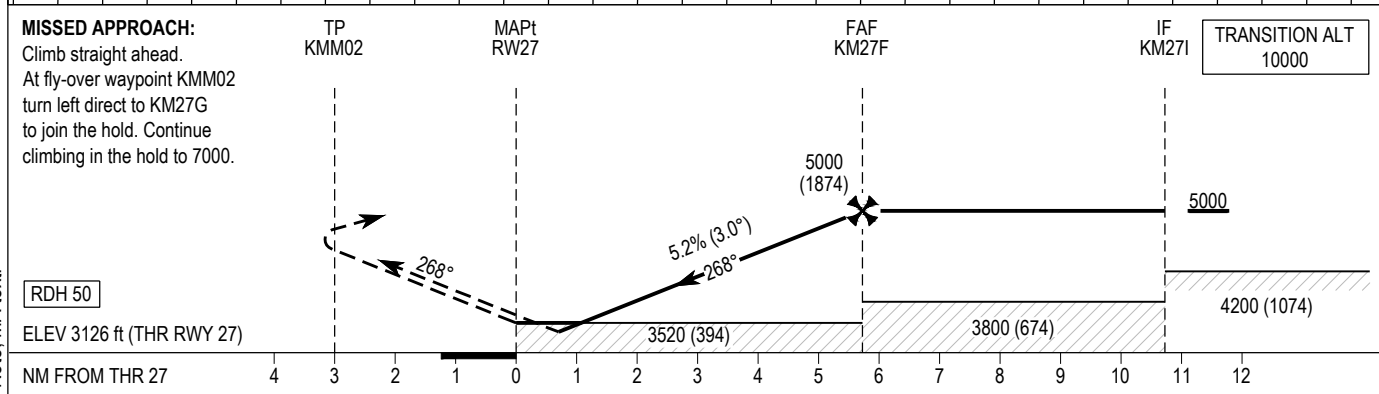
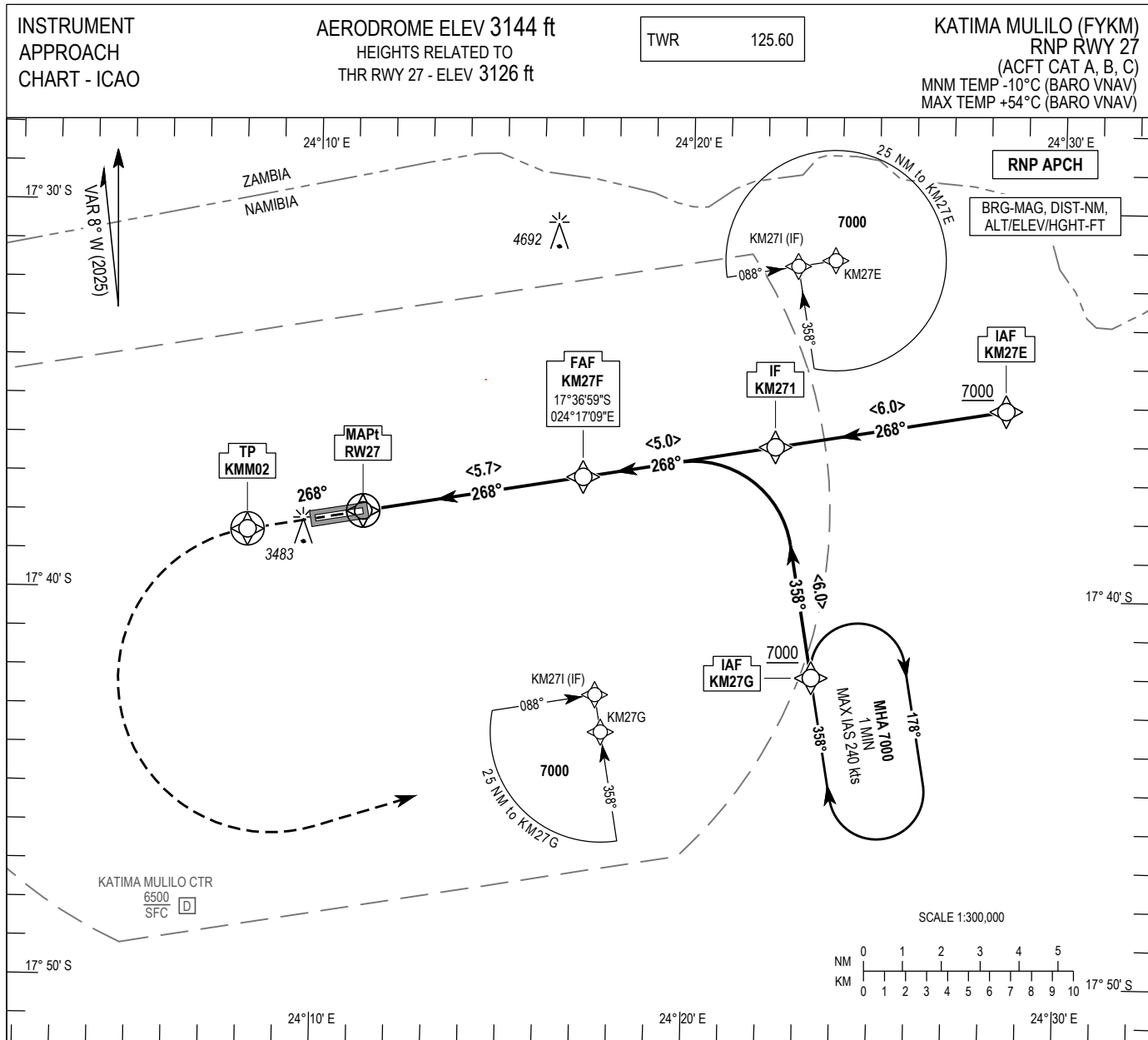
Nav. Spec.	WPT Name	Latitude (S) / Longitude (E)	Path Term	Fly-By Fly-Over	True Track / Mag Track	Distance (NM)	Upper Limit / Lower Limit	Speed Limit (kts)	VPA (°) / TCH (ft)	Remarks
RNP APCH	KM09A	174553.0 / 0235959.5	IF	-	-	-	- / +A7000	-	-	-
RNP APCH	KM09I	173956.7 / 0235856.6	TF	Fly-By	350.4 / 358	6.0	- / +A5000	-	-	-
RNP APCH	KM09F	173906.5 / 0240406.4	TF	Fly-By	080.4 / 088	5.0	-	-	-	Turn R
RNP APCH	RW09	173809.6 / 0240957.5	TF	Fly-Over	080.4 / 088	5.7	-	-	3.00 / 50	-
RNP APCH	KMM01	173739.4 / 0241303.6	CF	Fly-Over	080.4 / 088	-	-	-	-	-
RNP APCH	KM09A	174553.0 / 0235959.5	DF	Fly-By	-	-	-	-	-	Turn R

**RNP RWY09 via KM09B**

Nav. Spec.	WPT Name	Latitude (S) / Longitude (E)	Path Term	Fly-By Fly-Over	True Track / Mag Track	Distance (NM)	Upper Limit / Lower Limit	Speed Limit (kts)	VPA (°) / TCH (ft)	Remarks
RNP APCH	KM09B	174056.8 / 0235244.8	IF	-	-	-	- / +A7000	-	-	-
RNP APCH	KM09I	173956.7 / 0235856.6	TF	Fly-By	080.4 / 088	6.0	- / +A5000	-	-	-
RNP APCH	KM09F	173906.5 / 0240406.4	TF	Fly-By	080.4 / 088	5.0	-	-	-	-
RNP APCH	THR09	173809.6 / 0240957.5	TF	Fly-Over	080.4 / 088	5.7	-	-	3.00 / 50	-
RNP APCH	KMM01	173739.4 / 0241303.6	CF	Fly-Over	080.4 / 088	-	-	-	-	-
RNP APCH	KM09A	174553.0 / 0235959.5	DF	Fly-By	-	-	-	-	-	Turn R

**Hold Identification**

Holding Fix	Latitude (S) / Longitude (E)	Inbound True Track (degrees)	Inbound Mag Track (degrees)	Maximum Indicated Airspeed (kts)	Minimum Holding Level / Altitude (FL/ft)	Maximum Holding Level / Altitude (FL/ft)	Outbound Time (min)	Direction of Turn
KM09A	174553.0 / 0235959.5	350.4	358	-	+A7000	-	1	L



OCA (H)	A	B	C
LNAV	3520 (394)		
LNAV/VNAV	3390 (264)	3410 (284)	3430 (304)
Visual Manoeuvring South of RWY (Heights AAL) Circling to the North Prohibited	3780 (636)		3880 (736)

**NOTES:**

- Right hand circuits on RWY 09 and Left hand circuits on RWY 27 due training area North of RWY.
- Visual segment penetrated - Vegetation (Short final).

Recommended LNAV Profile on Final Approach

DIST THR RWY 27	2	3	4	5
ALT / HT (ft)	3810 (684)	4130 (1004)	4450 (1324)	4770 (1644)
Ground Speed	80	100	120	140
Descent rate gradient - 5.2% (3.0°) 320 ft/NM	430	530	640	740

CHANGE: B-VNAV OCA (H) Cat A, B; Note: MA text.

**RNP RWY27 via KM27E**

Nav. Spec.	WPT Name	Latitude (S) / Longitude (E)	Path Term	Fly-By Fly-Over	True Track / Mag Track	Distance (NM)	Upper Limit / Lower Limit (ft)	Speed Limit (kts)	VPA (°) / TCH (ft)	Remarks
RNP APCH	KM27E	173507.1 / 0242829.7	IF	-	-	-	- / +A7000	-	-	-
RNP APCH	KM27I	173608.1 / 0242218.2	TF	Fly-By	260.3 / 268	6.0	- / +A5000	-	-	-
RNP APCH	KM27F	173658.9 / 0241708.7	TF	Fly-By	260.3 / 268	5.0	-	-	-	-
RNP APCH	RW27	173757.1 / 0241114.2	TF	Fly-Over	260.3 / 268	5.7	-	-	3.00 / 50	-
RNP APCH	KMM02	173827.6 / 0240808.2	CF	Fly-Over	260.3 / 268	-	-	-	-	-
RNP APCH	KM27G	174204.4 / 0242321.8	DF	Fly-By	-	-	-	-	-	Turn L

**RNP RWY27 via KM27G**

Nav. Spec.	WPT Name	Latitude (S) / Longitude (E)	Path Term	Fly-By Fly-Over	True Track / Mag Track	Distance (NM)	Upper Limit / Lower Limit (ft)	Speed Limit (kts)	VPA (°) / TCH (ft)	Remarks
RNP APCH	KM27G	174204.4 / 0242321.8	IF	-	-	-	- / +A7000	-	-	-
RNP APCH	KM27I	173608.1 / 0242218.2	TF	Fly-By	350.3 / 358	6.0	- / +A5000	-	-	-
RNP APCH	KM27F	173658.9 / 0241708.7	TF	Fly-By	260.3 / 268	5.0	-	-	-	Turn L
RNP APCH	RW27	173757.1 / 0241114.2	TF	Fly-Over	260.3 / 268	5.7	-	-	3.00 / 50	-
RNP APCH	KMM02	173827.6 / 0240808.2	CF	Fly-Over	260.3 / 268	-	-	-	-	-
RNP APCH	KM27G	174204.4 / 0242321.8	DF	Fly-By	-	-	-	-	-	Turn L

**Hold Identification**

Holding Fix	Latitude / Longitude	Inbound True Track (degrees)	Inbound Mag Track (degrees)	Maximum Indicated Airspeed (kts)	Minimum Holding Level / Altitude (FL/ft)	Maximum Holding Level / Altitude (FL/ft)	Outbound Time (min)	Direction of Turn
KM27G	174204.4S / 0242321.8E	350.3	358	-	+A7000	-	1	R