	<p>REPUBLIC OF NAMIBIA</p> <p>NAMIBIA CIVIL AVIATION AUTHORITY</p> <p>AIRAC</p> <p>AIP SUPPLEMENT</p>	<p>Executive Director Namibia Civil Aviation Authority Private Bag 12003 Ausspannplatz WINDHOEK</p>
<p>Tel: +264 61702082/2203 Fax: +264 61 702088 e-mail: aip@ncaa.na</p>		<p>AIRAC AIP SUP S01/2024 25 January 2024</p>

FYWE AD 2. AERODROMES

Effective date: 21 March 2024

Validity: PERM

FYWE AD 2.1 AERODROME LOCATION INDICATOR AND NAME

FYWE – Windhoek Eros Airport

FYWE AD 2.2 AERODROME GEOGRAPHICAL AND ADMINISTRATIVE DATA

1	<i>ARP coordinates and site at AD</i>	223632.00S 0170444.00E
2	<i>Direction and distance from (city)</i>	5 km South of Windhoek Central Business District.
3	<i>Elevation/Reference temperature</i>	5574FT and Nil Temperature
4	<i>Geoid undulation at AD ELEV PSN</i>	105FT
5	<i>Magnetic (MAG)variation (VAR)/Annual change</i>	12°W (2016)/0.09° decreasing.
6	<i>Name of aerodrome operator, address, telephone, telefax numbers, e-mail address, AFS address and, if available, website address</i>	Namibia Airports Company Limited Eros Airport Private Bag 13357 WINDHOEK Ms. Maria Hamunyela: Airport Manager Contact Details Tel: +264 61 2955501 Telefax: Nil Cell: +264 811273965 (during or after hours) Email: Hamunyelam@airports.com.na

		Website: www.airports.com.na AFS: Nil
7	<i>Types of traffic permitted (IFR/VFR)</i>	IFR/VFR
8	<i>Remarks</i>	Nil

FYWE AD 2.3 OPERATIONAL HOURS UTC

1	<i>Aerodrome Operator</i>	MON - FRI: 04H00- 19H00 SAT: 04H00- 18H00 SUN: 05H00- 19H00
2	<i>Customs and Immigration</i>	As AD Administration
3	<i>Health and sanitation</i>	As AD Administration
4	<i>Aeronautical Information Service (AIS) briefing office</i>	MON - FRI: 03H00 - 19H00 SAT: 03H00 - 18H00 SUN: 04H00 - 19H00
5	<i>ATS reporting office (ARO)</i>	As AD Administration
6	<i>MET Briefing Office</i>	As AD Administration
7	<i>ATS</i>	As AD Administration
8	<i>Fuelling</i>	MON – FRI: 04H00 – 18H00 SAT & SUN: 04H00 – 14H00
9	<i>Handling</i>	As AD Administration
10	<i>Security</i>	H24
11	<i>De-icing</i>	Nil
12	<i>Remarks</i>	See section AD 2.20 for Airport Regulations. NAMRA/Customs and Excise Contact Details Tel: +264 61 254233 Cell: +264 812514347 Immigration Contact Details Tel:+264 61 232282 Cell: +264 811278881/+264 812064910 Aeronautical Information Services Contact Details Tel: +264 61 702080/1/3 Fax: +264 61 702088 Meteorological Services Contact Details Tel: +264 61 301131 Cell: +264 812844120 Air Traffic Services Contact Details Tel: +264 61 702090/702490 Cell: +264 812307149 Fuelling Contact Details Fuel attendant's: TEL: +264 61 232900 After HR TEL: +264 811290097/+264 811241881/+264 0811432390

FYWE AD 2.4 HANDLING SERVICES AND FACILITIES

1	<i>Cargo-handling facilities</i>	Manual Forklift Capacity 1000kg, x2 Cargo Dolley's ,Cargo Cart , Cargo Cooler and weighing/scale machine 600kg
2	<i>Fuel/oil types</i>	Jet A1 and Avgas
3	<i>Fuelling facilities/capacity</i>	Bowser truck Jet A1 capacity of 10 000L and Bowser truck Avgas capacity of 5000L
4	<i>De-icing facilities</i>	Nil
5	<i>Hangar space for visiting aircraft</i>	Nil
6	<i>Repair facilities for visiting aircraft</i>	West Air/Aviation Centre
7	<i>Remarks</i>	Puma Energy Namibia (PTY) LTD PO Box 3594, Windhoek, Namibia Tel: +264 61 379300 E-mail: efsman@iway.na / caster.mafwizo@pumaenergy.com

FYWE AD 2.5 PASSENGER FACILITIES

1	<i>Hotels</i>	Near the AD and in the city
2	<i>Restaurants</i>	On the AD and in the city
3	<i>Transportation</i>	Taxi service and Car hire
4	<i>Medial facilities</i>	First aid, Ambulance on AD and Hospital in the City
5	<i>Bank and Post Office</i>	In the City
6	<i>Tourist Office</i>	In the City
7	<i>Remarks</i>	Nil

FYWE AD 2.6 RECUE AND FIRE-FIGHTING SERVICES

1	<i>AD category for fire-fighting</i>	Within AD HR: CAT 5
2	<i>Rescue equipment</i>	2x Rescue Vehicles FT1: 12 000 Litres water / 1600 Litres foam / Discharge rate: 5000 L/min @ 10 Bars FT2: 12 500 Litres water /1 500 Litres foam / Discharge rate: 6000 L/min @ 10 Bars

3	<i>Capability for removal of disabled aircraft</i>	Nil
4	<i>Remarks</i>	Nil

FYWE AD 2.7 SEASONAL AVAILABILITY – CLEARING

1	<i>Types of clearing equipment</i>	Nil
2	<i>Clearance priorities</i>	Nil
3	<i>Remarks</i>	Nil

FYWE AD 2.8 APRONS, TAXIWAYS AND CHECK LOCATIONS/POSITIONS DATA

1	<i>Apron designation, surface and strength</i>	Surface: Asphalt and Concrete Strength: Apron (Flexible): 6/F/D/Y/T Apron (Slab A): 7/R/D/Y/T Apron (Slab B): 3/R/D/Y/T																											
2	<i>Taxiway designation, width, surface and strength</i>	Alpha 15 m Asphalt 7/F/D/Y/T Bravo 15 m Asphalt 7/F/D/Y/T Charlie 15 m Asphalt 7/F/D/Y/T Delta 15 m Asphalt 7/F/D/Y/T Echo 15 m Asphalt 7/F/D/Y/T Hotel 15 m Asphalt 7/F/D/Y/T																											
3	<i>Altimeter checkpoint location and elevation</i>	Location: At Apron <i>Note: All Aircraft parking stands are designated pre-flight altimeter check locations.</i> <table border="1"> <thead> <tr> <th>Aircraft Stand Number</th> <th>Geographical Coordinates of centre point</th> <th>Elevation</th> </tr> </thead> <tbody> <tr> <td>A1: SA1-CL5</td> <td>223603.83S 0170449.85E</td> <td>5535FT</td> </tr> <tr> <td>A2: SA2-CL3</td> <td>223605.71S 0170450.21E</td> <td>5535FT</td> </tr> <tr> <td>A3: SA3-CL3</td> <td>223607.77S 0170450.57E</td> <td>5535FT</td> </tr> <tr> <td>A4: SA4-SL2</td> <td>223604.74S 0170447.91E</td> <td>5535FT</td> </tr> <tr> <td>A5: SA5-SL2</td> <td>223605.58S 0170448.06E</td> <td>5535FT</td> </tr> <tr> <td>A6: SA6-CL4</td> <td>223606.44S 0170448.22E</td> <td>5535FT</td> </tr> <tr> <td>A7: SA7-CL3</td> <td>223607.68S 0170448.44E</td> <td>5535FT</td> </tr> <tr> <td>A8: SA8-CL3</td> <td>223608.68S 0170448.63E</td> <td>5535FT</td> </tr> </tbody> </table>	Aircraft Stand Number	Geographical Coordinates of centre point	Elevation	A1: SA1-CL5	223603.83S 0170449.85E	5535FT	A2: SA2-CL3	223605.71S 0170450.21E	5535FT	A3: SA3-CL3	223607.77S 0170450.57E	5535FT	A4: SA4-SL2	223604.74S 0170447.91E	5535FT	A5: SA5-SL2	223605.58S 0170448.06E	5535FT	A6: SA6-CL4	223606.44S 0170448.22E	5535FT	A7: SA7-CL3	223607.68S 0170448.44E	5535FT	A8: SA8-CL3	223608.68S 0170448.63E	5535FT
Aircraft Stand Number	Geographical Coordinates of centre point	Elevation																											
A1: SA1-CL5	223603.83S 0170449.85E	5535FT																											
A2: SA2-CL3	223605.71S 0170450.21E	5535FT																											
A3: SA3-CL3	223607.77S 0170450.57E	5535FT																											
A4: SA4-SL2	223604.74S 0170447.91E	5535FT																											
A5: SA5-SL2	223605.58S 0170448.06E	5535FT																											
A6: SA6-CL4	223606.44S 0170448.22E	5535FT																											
A7: SA7-CL3	223607.68S 0170448.44E	5535FT																											
A8: SA8-CL3	223608.68S 0170448.63E	5535FT																											
4	<i>VHF omnidirectional radio range (VOR) checkpoints</i>	Nil																											
5	<i>INS checkpoints</i>	Nil																											
6	<i>Remarks</i>	Nil																											

FYWE AD 2.9 SURFACE MOVEMENT GUIDANCE AND CONTROL SYSTEM AND MARKINGS

1	<i>Use of aircraft stand ID signs, TWY guidelines and visual docking/parking guidance system of aircraft stands</i>	Aircraft stand and Markings available on the apron. Taxiing guidance signs at all intersections with TWY and RWY markings at all holding positions. Guidelines at apron. Parking of ACFT as per the Marshaller guidance to the aircraft stands.
2	<i>RWY and TWY markings and LGT</i>	RWY 01/19: Designation, Centreline, Threshold, Aiming Point and Touchdown Zone appropriately marked. LGT: Runway Edge (01/19) TWY: Centreline and Holding positions appropriate marked. LGT: Taxiway Edge Light (Intersection Delta)
3	<i>Stop bars</i>	Nil
4	<i>Other runway protection measures</i>	Nil
5	<i>Remarks</i>	Nil

FYWE AD 2.10 AERODROME OBSTACLES

Area 2b					
<i>OBST ID/ Designation</i>	<i>OBST Type</i>	<i>OBST Position</i>	<i>ELEV/HGT (FT)</i>	<i>Markings /Type, Colour, lighting (LGT)</i>	<i>Remarks</i>
<i>a</i>	<i>b</i>	<i>c</i>	<i>d</i>	<i>e</i>	<i>f</i>
AUASLIT	Pole	223642.00S 0170512.90E	5623/44.3	LGT/	Transitional 27
FLOODLIGHT 2:	Pole	223625.60S 01705029.70E	5692/104.98	NIL	Transitional 01/19

FLOODLIGHT 3:	Pole	223630.10S 0170529.10E	5689/104.98	NIL	Transitional 01/19
FLOODLIGHT 4:	Pole	223629.40S 0170525.00E	5692/104.98	NIL	Transitional 01/19
MNC MAST:	Tower	223613.50S 0170601.90E	5712/87.20	NIL	Inner Horizontal
MTC CIMBEBASIA	Tower	223738.40S 0170453.60E	5709/78.1	Marked LGT	Inner Horizontal Approach 01 Take Off Climb
MTC STADIUM	Tower	223638.40S 0170529.40E	5666/81.82	Marked LGT	Approach 27 Inner Horizontal
TELECOM TOWER:	Tower	223806.80S 0170435.10E	5764/90.97	LGT	Inner Horizontal
TREE ANT MAST:	Tower	223609.20S 0170701.50E	5810/52.92	LGT	Inner Horizontal

Area 2c					
<i>OBST ID/ Designation</i>	<i>OBST Type</i>	<i>OBST Position</i>	<i>ELEV/HGT (FT)</i>	<i>Markings /Type, Colour, lighting (LGT)</i>	<i>Remarks</i>
<i>a</i>	<i>b</i>	<i>c</i>	<i>d</i>	<i>e</i>	<i>f</i>
Antenna Mast 1	Equipment	223637.80S 0170456.10E	5653/83.66	LGT	Transitional 01/19 Transitional 09/27
Antenna Mast 2	Equipment	223637.90S 0170456.10E	5649/83.66	NIL	Transitional 01/19

					Transitional 09/27
Antenna Mast 3	Equipment	223637.10S 0170456.10E	5649/83.66	NIL	Transitional 01/19 Transitional 09/27
Antenna Mast 4	Equipment	223637.10S 0170456.20E	5649/83.66	NIL	Transitional 01/19 Transitional 09/27
Antenna Mast 5	Equipment	223638.00S 0170456.20E	5646/83.66	NIL	Transitional 01/19 Transitional 09/27
AP MTC TWR	Tower	223637.10S 0170456.10E	5646/80.61	NIL	Transitional 01/19 Transitional 09/27
FLOODLIGHT PRESS	Pole	223635.60S 0170454.10E	5614/80.38	NIL	Transitional 01/19
MTC MAST:	Tower	223554.50S 0170536.10E	5725/121.29	LGT	Inner Horizontal
MTC MAST B:	Tower	223602.70S 0170340.80E	5659/84.51	NIL	Inner Horizontal
MTC OLIMP:	Tower	223554.50S 0170536.10E	5843/118.11	Marked	Inner Horizontal
MTC PROSPERITA	Tower	223722.30S 0170508.30E	5725/112.96	LGT	Inner Horizontal
PRESEDENTIAL FLOODLIGHT	Pole	223635.30S 0170456.50E	5614/80.38	LGT	Transitional 01/19
TELECOM PARK STA	Tower	223536.10S 0170427.80E	5607/109.28	Marked LGT	Transitional 19
TELKOM TWR:	Tower	223627.30S 0170314.50E	5669/84.38	Marked LGT	Inner Horizontal
WINDSENSOR:	Equipment	223623.40S 0170439.30E	5571/23.10	NIL	Transitional 01/19

Area 3					
<i>OBST ID/ Designation</i>	<i>OBST Type</i>	<i>OBST Position</i>	<i>ELEV/HGT (FT)</i>	<i>Markings /Type, Colour, lighting (LGT)</i>	<i>Surface Penetrated</i>
<i>a</i>	<i>b</i>	<i>c</i>	<i>d</i>	<i>e</i>	<i>f</i>
APRNLTS	Pole	223606.40 S 0170451.70E	5613/81.69	LGT	Transitional 01 Transitional 19
APRON FLOOD LT 1	Pole	223600.90S 0170449.90E	5596/70.99	NIL	Transitional 01 Transitional 19
APRON FLOOD LT 2	Pole	223603.40S 0170451.20E	5607/81.43	LGT	Transitional 01 Transitional 19
APRON FLOOD LT 3	Pole	223606.40S 0170451.70E	5613/81.43	LGT	Transitional 01 Transitional 19
APRON FLOOD LT 4	Pole	223609.40S 0170452.20E	5616/81.43	LGT	Transitional 01 Transitional 19

FYWE AD 2.11 METEOROLOGICAL INFORMATION PROVIDED

1	<i>Associated Met office</i>	Windhoek
2	<i>Hours of service MET Office outside hours</i>	MON-FRI: 03H00 -18H00 UTC SAT-SUN: 04H00 -16H00 UTC
3	<i>Office responsible for terminal aerodrome forecast (TAF) preparation Periods of validity</i>	FYWH (06:00, 10:00, 12:00, 15:00 AND 18:00 UTC) Validity for short terminal aerodrome forecast (TAF)
4	<i>Trend forecast Interval of issuance</i>	N/A
5	<i>Briefing/consultation provided</i>	FYWH
6	<i>Flight documentation Language(s) used</i>	English

7	<i>Charts and other information available for briefing or consultation</i>	MODELS AND SATELLITE IMAGERY
8	<i>Supplementary equipment available for providing information</i>	SATELLITE IMAGERY
9	<i>ATS units provided with information</i>	FYWH
10	<i>Additional information (limitation of service, etc.)</i>	SATELLITE IMAGERY

FYWE AD 2.12 RUNWAY PHYSICAL CHARACTERISTICS

<i>Designations RWY NR</i>	<i>TRUE BRG</i>	<i>Dimensions of RWY (M)</i>	<i>Strength of the pavement classification number (PCN) and surface of RWY and SWY</i>	<i>THR coordinates RWY end coordinates THR geoid undulation</i>	<i>THR Elevation and highest elevation of TDZ of precision APPRWY</i>
1	2	3	4	5	6
01	351.19°	1983 x 30	6/F/D/Y/T RWY Asphalt SWY Paved	THR 223649.89S 0170449.59E RWY end 223650.08S 0170449.63E GUND105 FT	N/A
19	171.19°	1983 x 30	6/F/D/Y/T RWY Asphalt SWY Paved	THR 223546.57S 0170439.03E RWY end 223546.38S 0170439.00E GUND105 FT	N/A
09	75.53°	1005 x 30	5/F/D/Y/T RWY Asphalt Nil SWY	THR 223648.63S 0170429.47E RWY end 223648.68S 0170429.27E GUND105 FT	N/A

27	255.53°	1005 x 30	5/F/D/Y/T RWY Asphalt Nil SWY	THR 223640.58S 0170503.12E RWY end 223640.53S 0170503.32E GUND105 FT	N/A
<i>Designations RWY NR</i>	<i>Slope of RWY-SWY (%)</i>	<i>SWY dimensions (M)</i>	<i>Clearway (CWY) dimensions (M)</i>	<i>Strip dimensions (M)</i>	<i>Dimensions of runway end safety areas</i>
1	7	8	9	10	11
01	RWY-0.995 % SWY Nil	118x30	N/A	2103 x150	90x60
19	RWY -0.995 % SWY Nil	148x30	N/A	2103 x150	80x60
09	RWY -0.141 % SWY Nil	Nil	N/A	1065 x150	Nil
27	RWY -0.141 % SWY Nil	Nil	N/A	1065 x150	Nil
<i>Designations RWY NR</i>	<i>Location and description of engineering material arresting system (EMAS)</i>		<i>OFZ</i>	<i>Remarks</i>	
1	12		13	14	
01	Nil		Nil	Nil	
19	Nil		Nil	Nil	
09	Nil		Nil	Nil	
27	Nil		Nil	Nil	

FYWE AD 2.13 DECLARED DISTANCES

<i>RWY Designator</i>	<i>TORA (M)</i>	<i>TODA (M)</i>	<i>ASDA (M)</i>	<i>LDA (M)</i>	<i>Remarks</i>
1	2	3	4	5	6
01	1983	2101	2101	1865	Nil
19	1983	2131	2131	1835	Nil
09	1005	1005	1005	1005	Nil
27	1005	1005	1005	1005	Nil

FYWE AD 2.14 APPROACH AND RUNWAY LIGHTING

<i>RWY Designator</i>	<i>APCH LGT type LEN INTST</i>	<i>THR LGT color WBAR</i>	<i>VASIS (MEHT) PAPI</i>	<i>TDZ, LGT, LEN</i>	<i>RWY Centre line LGT Length, spacing colour INTST</i>	<i>RWY edge LGT LEN, spacing colour INTST</i>	<i>RWY End LGT colour WBAR</i>	<i>SWY LGT LEN (M) colour</i>	<i>Remarks</i>
1	2	3	4	5	6	7	8	9	10
01	Nil	Nil	PPL 400/3	Nil	Nil	60m	Red/Green	Nil	Non-precision approach
19	Nil	Nil	PPL 400/3	Nil	Nil	60m	Red/Green	Nil	Non-precision approach

FYWE AD 2.15 OTHER LIGHTING, SECONDARY POWER SUPPLY

1	<i>ABN/IBN location, characteristics, and hours of operation</i>	Nil
2	<i>LDI location and LGT Anemometer location and LGT</i>	LDI: Nil Anemometer: Abeam Windsock, RWY 01/19.
3	<i>TWY edge lights, centre line lights and stop bars (if any)</i>	TWY Edge: 18 blue elevated lights taxiway edge lights located on the edge of intersection delta. Centreline: Nil Stop Bars: Nil

4	<i>Secondary power supply/switch-over time</i>	Secondary power supply to all lighting at AD Switch- over time is within 15 seconds.
5	<i>Remarks</i>	The generator is a 3412C type, 800 KVA, 400V, 1250A, and is powered by Caterpillar.

FYWE AD 2.16 HELICOPTER LANDING AREA

1	<i>Coordinates touchdown and lift-off (TLOF) or THR of final approach and take-off (FATO) Geoid undulation</i>	Nil
2	<i>TLOF and/or FATO elevation M/FT</i>	Nil
3	<i>TLOF and FATO area dimensions, surface, strength, marking</i>	Nil
4	<i>True BRG of FATO</i>	Nil
5	<i>Declared distance available</i>	Nil
6	<i>APP and FATO lighting</i>	Nil
7	<i>Remarks</i>	<p>The helicopter operator must inform Rescue and Fire fighting personnel via telephone at +264 61-2955510/1, at least 24 hours in advance for the provision of helipad space.</p> <p>Arrival:</p> <ul style="list-style-type: none"> • All medium and heavy category helicopters arriving at FYWE must use RWY 01/19 as the Final Approach and Take-off (FATO) area. • All Small category helicopters arriving at FYWE must use taxiway as the Final Approach and Take-off (FATO) area. • Once the helicopter establishes in the hover, taxi clearance must be requested from ATC on radio frequency 118.7 MHz to hover-taxi to the Touchdown and Lift off (TLOF) area located on the apron or straight to the hangar. <p>Departure:</p> <ul style="list-style-type: none"> • All medium and heavy category helicopters departing from FYWE must use RWY 01/19 as the FATO.

		<ul style="list-style-type: none"> • All Small category helicopters departing from FYWE must use taxiway as the Final Approach and Take-off (FATO) area. • Once ready for lift off from the approved TLOF, the pilot must request clearance from ATC via radio frequency 118.7 MHz. • The helicopters will hover-taxi to RWY 01/19 or to the taxiway as per the ATC clearance.
--	--	---

FYWE AD 2.17 ATS AIRSPACE

1	<i>Designation and lateral limits</i>	Eros CTR: Lateral Limits 223020.98S 0165816.99E – clockwise along the arc of a circle, radius 8NM centred at 223546.57S 0170439.03E – 222848.97S 0170857.20E – 224215.16S 0171112.18E – clockwise along the arc of a circle, radius 8NM centred at 223649.88S 0170449.59E – 224347.40S 0170030.99E to point of origin.
2	<i>Vertical limits</i>	GND / 7500 FT AMSL
3	<i>Airspace classification</i>	C
4	<i>ATS unit call sign Language(s)</i>	Eros Tower English
5	<i>Transition altitude</i>	10 000 FT MSL
6	<i>Hours of applicability (or activation)</i>	AD Administration
7	<i>Remarks</i>	Nil

FYWE AD 2.18 ATS COMMUNICATION FACILITIES

<i>Service designation</i>	<i>Call sign</i>	<i>Frequency</i>	<i>Hours of operation</i>	<i>Remarks</i>
1	2	3	4	5
Tower	Eros Tower	118.7 MHz	Same as AD	Co-ordinates 223638.23S 0170455.20E
Approach	Windhoek Approach	120.5 MHz	H24	
ATIS	Eros ATIS	126.4MHz	H24	Operational 50NM radius around Eros Airport on FREQ 126.4MHz or TEL 0813323508

FYWE AD 2.19 RADIO NAVIGATION AND LANDING AIDS

<i>Type of aid, MAG VAR, Type of supported OPS (for VOR/ILS/MLS, give declination)</i>	<i>ID</i>	<i>Frequency</i>	<i>Hours of Operation</i>	<i>Position of transmitting antenna coordinates</i>	<i>Elevation of Distance- measuring equipment (DME) transmitting antenna</i>	<i>Service volume radius from the GBAS reference point</i>	<i>Remarks</i>
1	2	3	4	5	6	7	8
Nil	Nil	Nil	Nil	Nil	Nil	Nil	Nil

FYWE AD 2.20 LOCAL TRAFFIC REGULATIONS

1. AIRPORT REGULATIONS

1.1 Hazard, Incident, and Accident Reporting

All safety hazards, incidents and accidents to be reported to FYWE fire station control room at 061-2955511 or the Safety & Environmental Officer on duty at 061-2955519/5515 or emailed to erosafety@airports.com.na.

1.2 Golf course on final APCH RWY 01.

- Trees on grounds on the left to right of APCH area.
- Boundary on golf course adjoins south BDRY of AD.

1.3 Circuit ALT:

- Turbine powered aircraft 7 000 FT ALT.
- Reciprocating engine powered aircraft 6 500 FT ALT.

1.4 Airport operation

Aircraft operations restricted to domestic, regional intercontinental non-scheduled flights and scheduled regional overnight express freight flights whose empty aircraft weight is less than 5 700kg and a payload not exceeding 1500kg.

1.5 Reflective jackets

All pilots and crew operating at Eros Airport must wear a lime green reflective jacket depicting their airlines concerned on the rear of the jacket for safety reasons as well as easy identification.

1.6 New Aircraft operating at Eros Airport

Aircraft operators intending to operate an aircraft for the first time at Eros Airport must apply in writing through the Airport Manager and complete the new Aircraft Application form and may only operate the new aircraft upon approval by NAC.

1.7 Airport Charges

1.7.1 After Hours Operation

An applicant requiring to operate outside the airports published operational hours must apply in writing at least 48 hours in advance to the Airport Manager who after consultation with service providers will approve or reject the request. This excludes any ambulance, emergency flights and any diversions. Operators not complying with the above have to take any inconvenience into consideration, because of the distance to be travelled by the service provider between the place of residence and the airport. After-hours for domestic and international aircraft charges will apply.

1.7.2 Landing /Parking and Passenger Fees

All unscheduled and charters flight to effect payment directly to NAC upon arrival and before departure and not to any third parties, payment can be done at Apron office located at the Fire Station.

2 TAXIING TO AND FROM STANDS

Take-off on Runway 01/19

- Aircraft cleared to take-off on runway 01, may exit the apron and enter the parallel taxiway and taxi to intersection Alpha to threshold 01 for take -off.

- Aircraft cleared to take-off on runway 19, may exit the apron and enter the parallel taxiway and taxi to intersection Echo to threshold 19 for take-off.

Take-off on Runway 09/27

- Aircraft cleared to take-off on runway 09, may exit the apron and enter the parallel taxiway and taxi to main runway 01/19 and secondary runway 09/27 intersection and proceed to threshold 09 for take-off.
- Aircraft cleared to take-off on runway 27, may exit the apron and enter the parallel taxiway and taxi to main runway 01/19 and secondary runway 09/27 intersection and proceed to threshold 27 for take-off.

Landing on Runway 01/19

- Aircraft landing on runway 01 may exit the runway 01/19 via taxiway Charlie, Delta or Echo into parallel taxiway and taxi to enter the apron or hangers.
- Aircraft landing on runway 19 may exit the runway 01/19 via taxiway Charlie, secondary runways intersection, Bravo, or Alpha into parallel taxiway and taxi to enter the apron or hangers.

Landing on Runway 09/27

- Aircraft landing on runway 27 may exit runway 09/27 into parallel taxiway and taxi to enter the apron or hangers.
- Aircraft landing on runway 27 may enter the main runway 01/19 and vacate Charlie intersection onto parallel taxiway and taxi to enter the apron or hangers.
- Aircraft landing on runway 09 may proceed and cross the main runway intersections and exit runway 09/27 into parallel taxiway and taxi to enter the apron or hangers.

3 SECURING OF LIGHT AIRCRAFT

There is no designated stands for the parking of small aircrafts, Pilot are strictly requested to adhere to the marshalling signals from the Marshaller.

No aircraft mooring points available at FYWE, Aircraft mooring weights available:

- 2 x 35kg pairs;
- 2 x 50kg pairs;
- 1 x 70kg pair; and
- 1 x mobile trolley

The mooring equipment are stored at a demarcated area located between Apron office and Cargo Warehouse on the airside.

Pilots inform ARFF Control Room at 061-2955511 that they require Mooring Weights, and the ARFF control room will inform the Safety & Environmental Officer on duty.

Once the mooring weights have been used, it is the responsibility of the Aircraft Operator to return the weights to the designated storage area.

4 PARKING AREA FOR HELICOPTERS

Once the helicopter enters the apron, ATC will instruct the pilot to follow the direction of the Aircraft Marshalls to an allocated parking position on the apron.

5 AIRCRAFT TAXIING TO THE APRON

Inbound Traffic:

Upon the aircraft's arrival, the ATS shall inform the Pilot in command to taxi directly to the apron and follow the instruction of the Marshaller to park the aircraft.

6 SCHOOL AND TRAINING FLIGHTS – TECHNICAL TEST FLIGHTS – USE OF RUNWAYS

7.1 Windhoek Flight Training Centre.

7.2 NATA

7.3 NDF

7.4 Signa Aviation

School and training flights must only be made after permission has been obtained from ATS.

7 HELICOPTER TRAFFIC – LIMITATION

Non-scheduled public air traffic with helicopters is permitted only after prior approval from the Eros Aerodrome Administration. Any contact concerning the above shall be made via the handling company or directly to the Airport Office during the hours of service and, if possible, not later than the day before the flight is to be carried out.

Any request for approval of traffic shall contain the following information:

- a) Owner/operator
- b) Type of helicopter, registration/call sign
- c) Date, arrival time/departure time, destination(s).

Furthermore, other details relevant to the evaluation of the request shall be given as required.

8 REMOVAL OF DISABLED AIRCRAFT FROM RUNWAYS

When an aircraft become disable on a runway, it is the duty of the owner or user of such aircraft to remove as soon as possible. If the disabled aircraft is not removed from the runway as quickly as possible by the owner or user, the airport operator shall assume the responsibility for the

removal of the disabled aircraft at the cost of the aircraft operator and shall be indemnified of any damages caused pursuant to the removal of the aircraft.

FYWE AD 2.21 NOISE ABATEMENT PROCEDURES

1. Departure from RWY 01 shall maintain runway heading until passing 6500 feet before a turn is made or passing the State Hospital.
2. Traffic in the Eros circuit will remain west of the western bypass (when joining downwind for RWY 01/19).
3. Simulated engine failure after take-off will be done overhead the David Hosea Meroro Road.
4. Bad weather circuits (training) will be kept to minimum and only between the hours of 08h00 (local) and 17h00 (local).

Note: Deviations from the above-mentioned procedures are allowed for separation purposes and emergencies.

FYWE AD 2.22 FLIGHT PROCEDURES

1. General

VFR aircraft approaching EROS via uncontrolled airspace shall plan to enter the CTR via the entry points and at the entry levels as published on the Visual Approach chart for Eros Airport.

2. Procedures for IFR flights within Windhoek (Eros) CTR

RNP Approach Runway 01 for NCAA approved operators only.

3. Procedures within Eros CTR

3.1 Radar vectoring and sequencing

Nil facility.

3.2 Surveillance radar approaches

Nil facility.

3.3 Precision radar approach

Nil facility.

3.4 Communication failure

- a) Squawk 7600
- b) Phone +264 61 702090.
- c) Enter CTR via Toni 8000FT. Proceed to overhead AD. Observe other traffic and make blind transmit.

d) Flash LDG lights and watch TWR for optical signals

4. Speed Restrictions

4.1 Speed restrictions within Eros CTR:

- The following MAX IAS restrictions apply for arriving aircraft within the lateral and vertical confines of the Eros CTR:
- For reciprocating engine powered aircraft: MAX IAS 150KT.
- For turbine powered aircraft: MAX IAS 185KT.
- Speeds are mandatory and must be complied with.
- ATC may vary the speeds for traffic management.

4.2 Speed restriction within the Windhoek TMA:

- For arriving and departing aircraft, MAX IAS 250KT
- Restriction applies at and below FL150.
- Speed is mandatory and must be complied with.
- ATC may vary the speed for traffic management purposes.

4.3 Communication Failure Procedure

Unless special permission has been obtained from Eros Airport Approach or Eros Airport Tower as appropriate, flight within Eros Airport TMA and Eros Airport CTR shall be in accordance with the Instrument Flight Rules.

4.4 Radio Communication Failure (RCF)

- a) Aircraft to joint overhead the Aerodrome at 2000FT AGL
- b) Observe and join the aerodrome traffic circuit.
- c) Make all turns to the left whenever possible.
- d) Land as soon as possible and report to the ATC

FYWE AD 2.23 ADDITIONAL INFORMATION

1. All flights by night to:

Depart from RWY 01.

Landing from RWY 19

2. Bird concentrations in the vicinity of the airport

Intense activity of flocks of Guineafowls takes place daily after sunrise when birds fly from resting area (from threshold of RWY 01) across approach of runway 01 to their feeding area near the airport and before sunset the same activity as described above takes place in reverse when the birds return to their area.

Aerodrome Control (Management) will inform pilots of bird's activity through a NOTAM; therefore, pilots are advised to exercise cautions during approach, landing and taking off.

FYWE AD 2.24 CHARTS RELATED TO WINDHOEK (EROS)

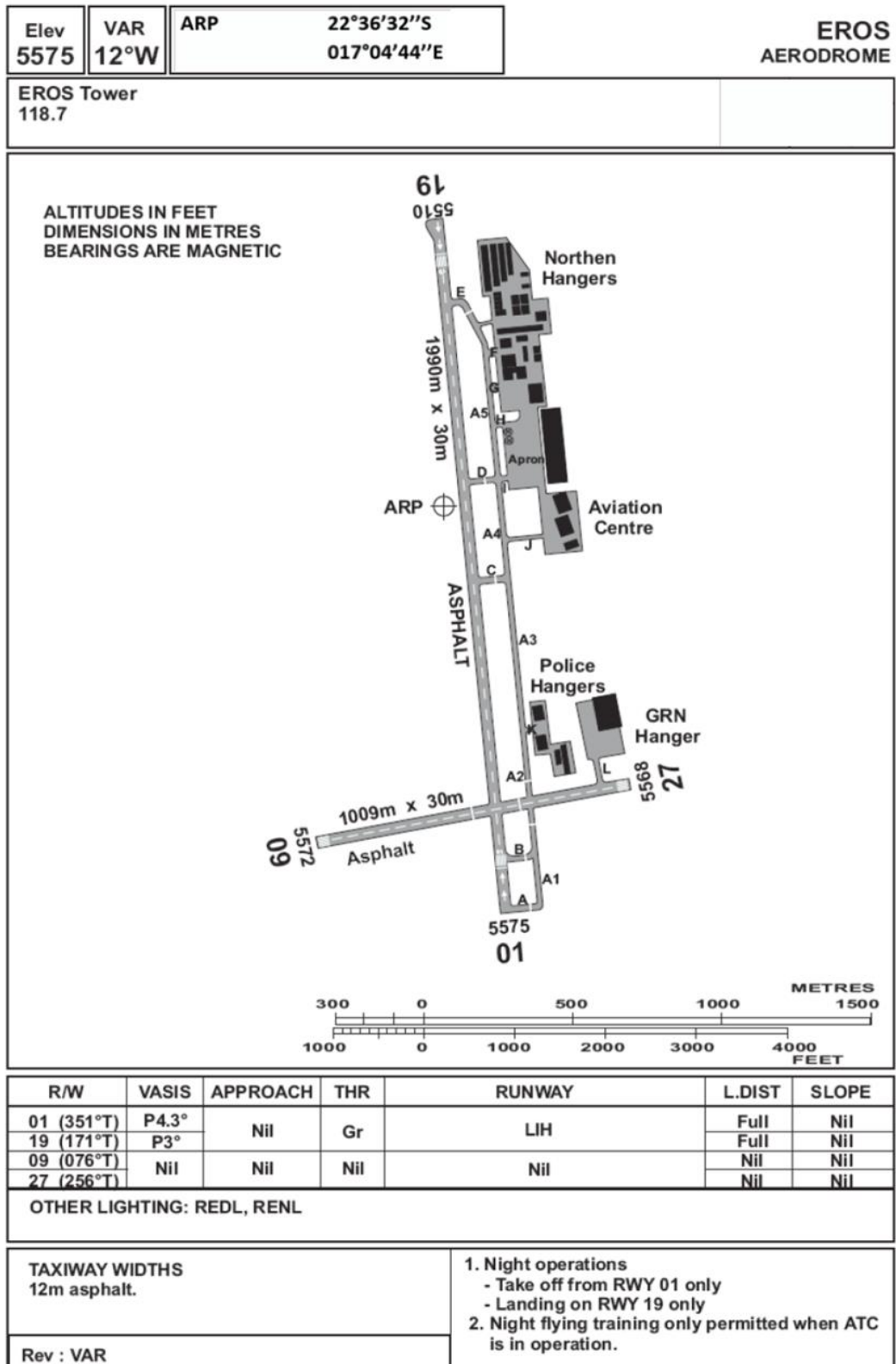
Appendix 1 FYWE Aerodrome Chart-ICAO

Appendix 2 FYWE Visual Approach Chart – ICAO

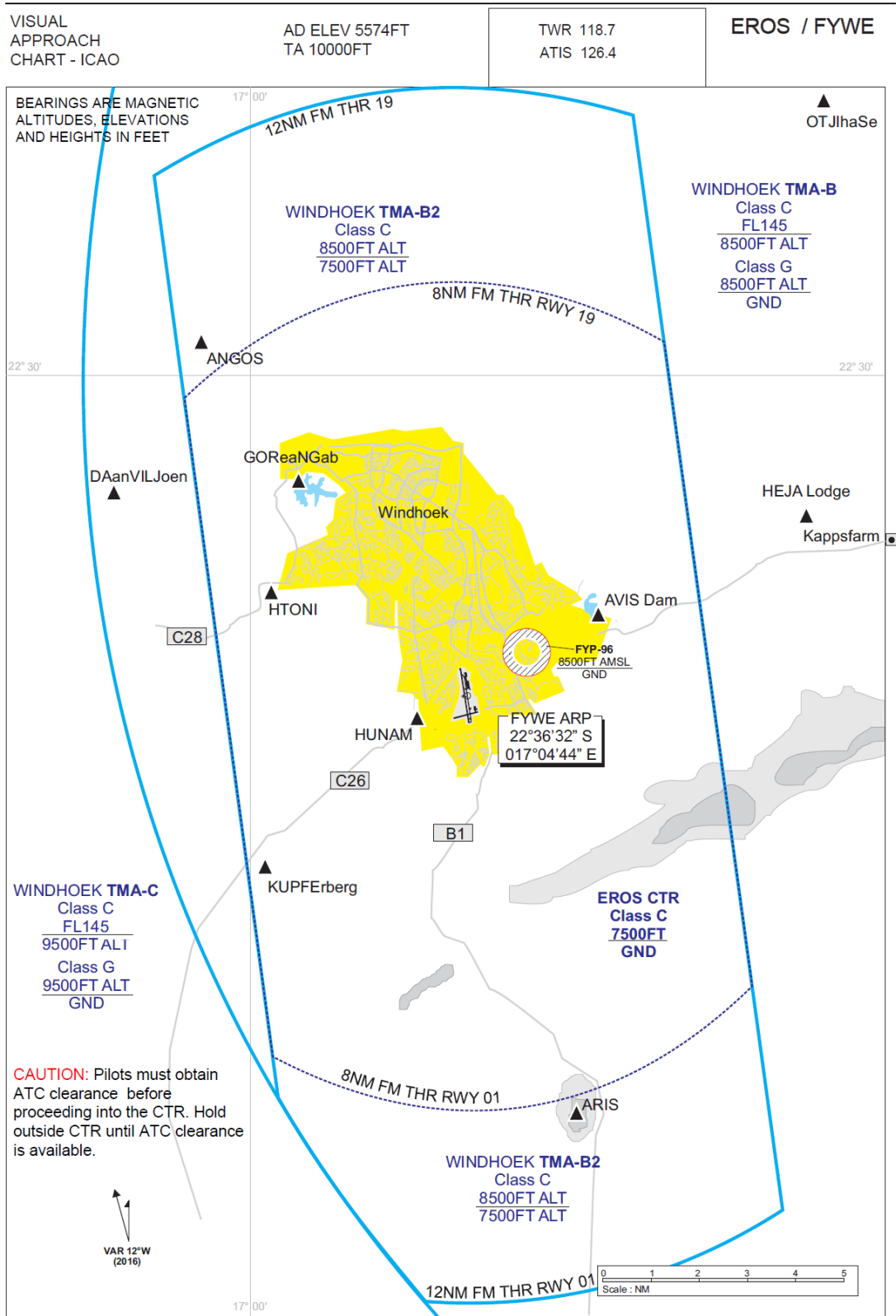
Appendix 3 FYWE Visual Approach Chart - ICAO Additional Information

Note: These appendices are only amending FYWE ARP.

Appendix 1 FYWE Aerodrome Chart-ICAO



Appendix 2 FYWE Visual Approach Chart – ICAO



CHANGES: Editorial, CAUTION note, For additional information see verso **For additional information see verso**

Appendix 3 FYWE Visual Approach Chart - ICAO Additional Information

VFR Point	Entry Alt	Exit Alt	Waypoints:
GORNG	7500FT	at or below 7000FT	ANGOS 222721.33S 0165935.90E GORNG 223142.97S 0170031.00E
HTONI	7500FT	at or below 7000FT	HEJAL 223210.82S 0171140.29E
HEJAL	ALT 7500FT	ALT 7000FT	KUPFE 223925.67S 0170003.35E
KUPFE	8000FT	at or below 7500FT	OTJIS 222531.68S 0171028.99E

COM failure:			VFR Holdings:
1. Squawk 7600			HAVIS 223425S 0170751E
2. Phone TWR 061-702090			HTONI 223410S 0170000E
3. Enter the CTR via HTONI 8000FT and continue overhead the field. Observe other traffic and transmit blind your intentions.			HUNAM 223641S 0170325E
4. Flash LDG lights and watch TWR for optical signals			

RWY	THR ELEV	VASIS	Waypoints must be spoken as follows:
01	5575	4.3°	ANGOS Abeam Ongos
19	5510	3°	GORNG Goreangab Dam
09	5572	NIL	HEJAL Heja Lodge
27	5568	NIL	KUPFE Kupferberg
			OTJIS Otjihase
			HTONI Toni Rust
			HUNAM UNAM
			HAVIS Avis Dam

NOTE: Model ACFT flying 900M East of PSN HEJAL
 Up to 150FT AGL. All ACFT must cross HEJAL MIN 7000FT AMSL