 <p>NCAA NAMIBIA CIVIL AVIATION AUTHORITY</p>	<p style="text-align: center;">REPUBLIC OF NAMIBIA NAMIBIA CIVIL AVIATION AUTHORITY AIRAC AIP SUPPLEMENT</p>	<p>Executive Director Namibia Civil Aviation Authority Private Bag 12003 Ausspannplatz WINDHOEK</p>
<p>Tel: +264 61 702082/2203 Fax: +264 61 702088 e-mail: aip@ncaa.na</p>		<p style="text-align: center;">AIRAC AIP SUP S03/2023 05 October 2023</p>

REVISED RNP APPROACHES FOR HOSEA KUTAKO (FYWH) AERODROME

Effective date: 30 November 2023

Validity Period: PERM

1. This AIP SUP holds revised charts for the RNP APCH RWY 08 and RWY 26 at Hosea Kutako International (FYWH) Aerodrome.
2. The revision was due to five year mandatory review of flight procedures as per NAMCAR Part 173.
3. The review includes changing the 5LNCs for all the Initial Approach Fixes (IAF) waypoints to comply with ICAO ICARD requirements.
4. Also included in this AIP SUP is the suggested Data Code sheet for the procedures.
5. Amend AIP ENR 4.4 by inserting the following Terminal Waypoints:

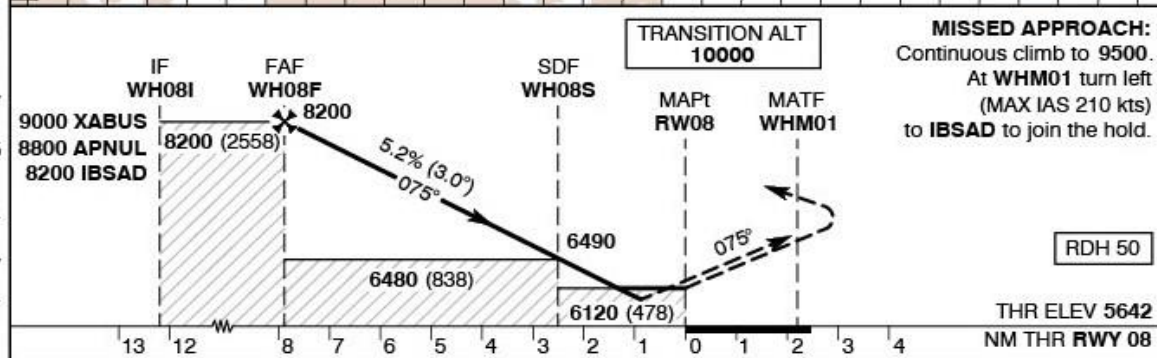
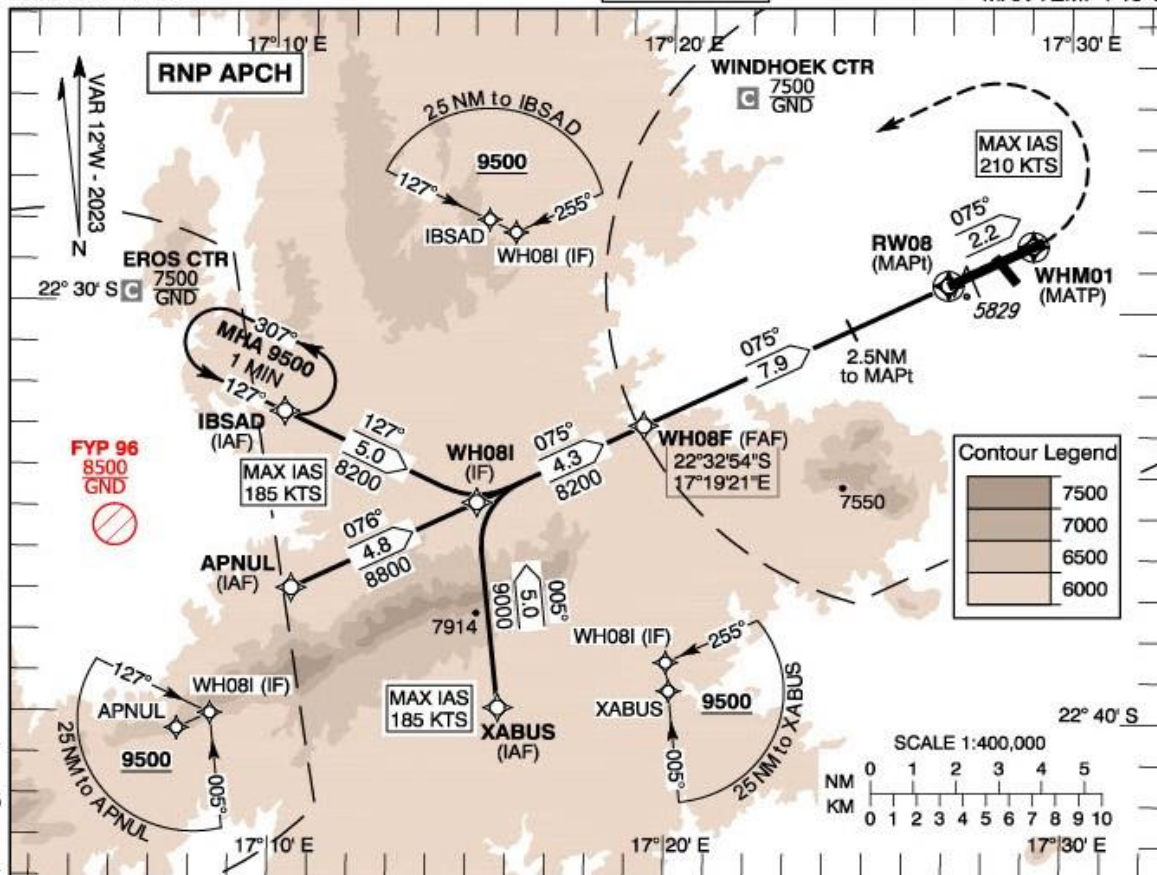
Name-code designator	Coordinates	Description	Remarks
1	2	3	
XABUS	223948.57S 0171546.04E	IAF	replacing OLLIE
IBSAD	223239.16S 0171017.90E	IAF	replacing IAWP3
IMPEP	222325.18S 0173953.96E	IAF	replacing FRITZ

6. The amended procedures become effective at 2311300000 UTC.
7. This AIP SUP will be cancelled when incorporated into the AIP, anticipated March 2024.
8. **Appendices:**
 - FYWH AD 2-37 – Instrument Approach Chart – ICAO RNP RWY 08
 - FYWH AD 2-38 – Suggested Data Code RNP RWY 08
 - FYWH AD 2-39 – Instrument Approach Chart – ICAO RNP RWY 26
 - FYWH AD 2-40 – Suggested Data Code RNP RWY 26

INSTRUMENT APPROACH CHART - ICAO AERODROME ELEV - 5641 FT
 HEIGHT RELATED TO THR RWY - 08 ELEV - 5642 FT

ATIS 126.20
 APP 120.50
 TWR 118.10
 APN 125.90

WINDHOEK - Hosea (FYWH) Kutako/Intl. RNP RWY 08
 MNM TEMP -15°C
 MAX TEMP +48°C



Aircraft CAT		A	B	C	D			
OCA (H)	LNAV	6120 (478)						
	LNAV/VNAV	5980 (338)	6000 (358)	6010 (368)	6020 (378)			
Circling (Heights AAL)		6300 (659)	6500 (859)	8100 (2459)	8100 (2459)			
Circling - N of RWY (AAL)		6150 (509)	6260 (619)	6570 (929)	6630 (989)			
Distance to MAPt		NM	7	6	5	4	3	2
Altitude		FT	7920 (2278)	7600 (1958)	7280 (1638)	6960 (1318)	6650 (1008)	6330 (688)
Ground Speed		KTS	80	100	120	140	160	
Descent Rate (3.0°)		FT/MIN	425	530	635	745	850	

NOTES:
 1. Track shortening inside IAF not permitted.

Bearings are magnetic. Altitudes, Elevation and Heights in feet. Distances in NM.

CHANGES: Left base initial leg, FAF OCA, Airspace, Circling, Temp restriction, Holding, RDH, Initial WPT renamed.

Suggested Data Code

Serial #	Navigational performance	Path descriptor	Waypoint identifier	Waypoint coordinates	Fly-Over	True track / Magnetic track	Distance [nm]	Turn direction	Upper limit / Lower limit	Speed [kts]	VPA [°] / TCH [ft]	Remarks
1	RNP APCH	IF	XABUS	22°39'48.57"S / 017°15'46.04"E	-	-	-	-	-	185	-	-
2	RNP APCH	TF	WH08I	22°34'49.38"S / 017°15'10.13"E	N	353.6 / 005	5.0	-	-	185	-	-
3	RNP APCH	TF	WH08A	22°32'53.88"S / 017°19'20.88"E	N	063.6 / 075	4.3	R	- / 8200	-	-	-
4	RNP APCH	TF	WH08S	22°30'29.98"S / 017°24'33.34"E	N	063.6 / 075	5.4	-	-	-	-	-
5	RNP APCH	TF	RW08	22°29'23.07"S / 017°26'58.44"E	Y	063.6 / 075	2.5	-	-	-	3.00 / 50	-
6	RNP APCH	CF	WHM01	22°28'24.27"S / 017°29'06.09"E	Y	063.6 / 075	-	-	-	210	-	085° WHV / D0.8 WHV
7	RNP APCH	DF	IBSAD	22°32'39.16"S / 017°10'17.90"E	N	-	-	L	-	210	-	-

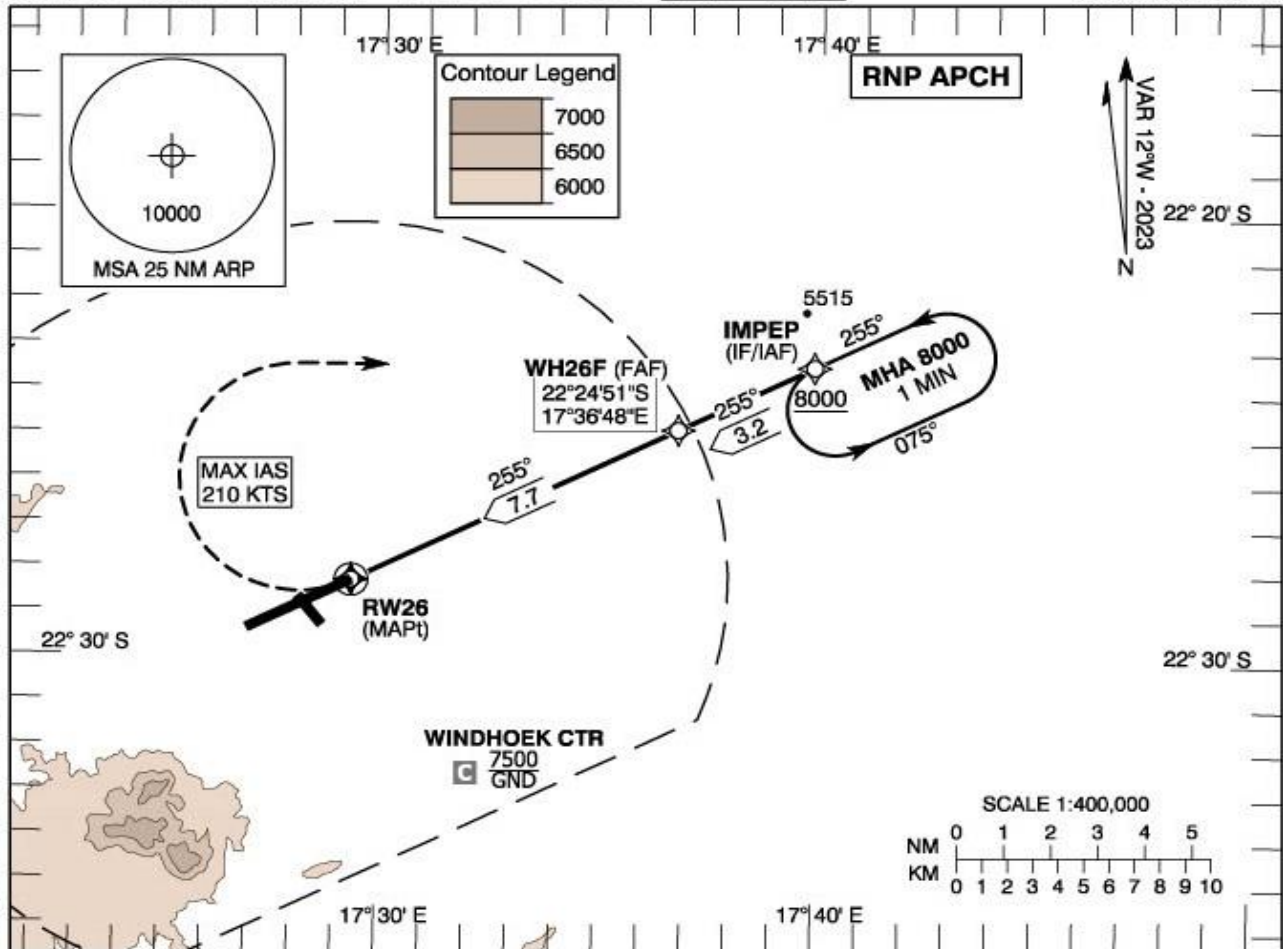
Serial #	Navigational performance	Path descriptor	Waypoint identifier	Waypoint coordinates	Fly-Over	True track / Magnetic track	Distance [nm]	Turn direction	Upper limit / Lower limit	Speed [kts]	VPA [°] / TCH [ft]	Remarks
1	RNP APCH	IF	APNUL	22°36'57.00"S / 017°10'31.00"E	-	-	-	-	-	-	-	-
2	RNP APCH	TF	WH08I	22°34'49.38"S / 017°15'10.13"E	N	063.8 / 076	4.8	-	-	-	-	-
3	RNP APCH	TF	WH08A	22°32'53.88"S / 017°19'20.88"E	N	063.6 / 075	4.3	-	- / 8200	-	-	-
4	RNP APCH	TF	WH08S	22°30'29.98"S / 017°24'33.34"E	N	063.6 / 075	5.4	-	-	-	-	-
5	RNP APCH	TF	RW08	22°29'23.07"S / 017°26'58.44"E	Y	063.6 / 075	2.5	-	-	-	3.00 / 50	-
6	RNP APCH	CF	WHM01	22°28'24.27"S / 017°29'06.09"E	Y	063.6 / 075	-	-	-	210	-	085° WHV / D0.8 WHV
7	RNP APCH	DF	IBSAD	22°32'39.16"S / 017°10'17.90"E	N	-	-	L	-	210	-	-

Serial #	Navigational performance	Path descriptor	Waypoint identifier	Waypoint coordinates	Fly-Over	True track / Magnetic track	Distance [nm]	Turn direction	Upper limit / Lower limit	Speed [kts]	VPA [°] / TCH [ft]	Remarks
1	RNP APCH	IF	IBSAD	22°32'39.16"S / 017°10'17.90"E	-	-	-	-	-	185	-	-
2	RNP APCH	TF	WH08I	22°34'49.38"S / 017°15'10.13"E	N	115.6 / 127	5.0	-	-	185	-	-
3	RNP APCH	TF	WH08A	22°32'53.88"S / 017°19'20.88"E	N	063.6 / 075	4.3	L	- / 8200	-	-	-
4	RNP APCH	TF	WH08S	22°30'29.98"S / 017°24'33.34"E	N	063.6 / 075	5.4	-	-	-	-	-
5	RNP APCH	TF	RW08	22°29'23.07"S / 017°26'58.44"E	Y	063.6 / 075	2.5	-	-	-	3.00 / 50	-
6	RNP APCH	CF	WHM01	22°28'24.27"S / 017°29'06.09"E	Y	063.6 / 075	-	-	-	210	-	085° WHV / D0.8 WHV
7	RNP APCH	DF	IBSAD	22°32'39.16"S / 017°10'17.90"E	N	-	-	L	-	210	-	-

Hold Identification – AD 2.37

Holding Fix	Latitude (N) / Longitude (W)	Inbound True Track (degrees)	Inbound Mag Track (degrees)	Maximum Indicated Airspeed (kts)	Minimum Holding Altitude/ Level (FL/ft)	Maximum Holding Altitude/ Level (FL/ft)	Outbound time (min)	Direction of Turn
IBSAD	22°32'39.16"S / 017°10'17.90"E	115.7	127	-	9500	-	1	L

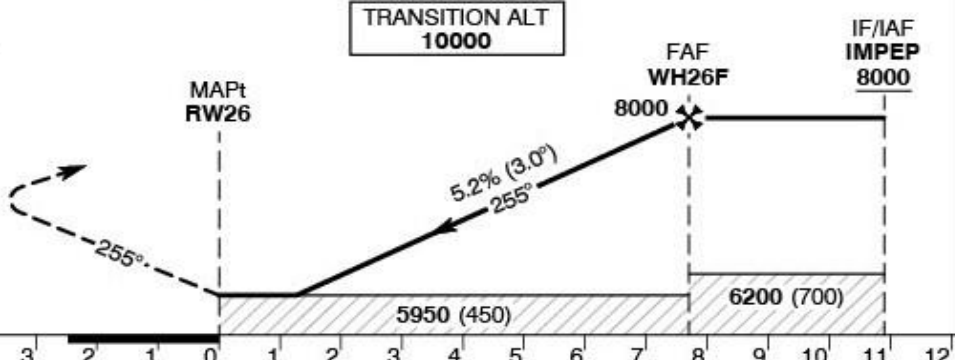
INSTRUMENT APPROACH CHART - ICAO AERODROME ELEV - **5641 FT** ATIS 126.20 WINDHOEK - Hosea (FYWH)
 HEIGHT RELATED TO APP 120.50 Kutako/Intl. RNP RWY 26
 THR RWY - **26 ELEV - 5500 FT** TWR 118.10 MNM TEMP -15°C
 APN 125.90 MAX TEMP +51°C



MISSED APPROACH:
 Continuous climb to 8000.
 At RW26 turn right
 (MAX IAS 210 kts)
 to IMPEP to join the hold.

RDH 50

THR ELEV 5500
 NM THR RWY 26



Aircraft CAT		A	B	C	D			
OCA (H)	LNAV	5950 (450)						
	LNAV/VNAV	5920 (420)	5940 (440)	5950 (450)	5990 (490)			
Circling (Heights AAL)		6300 (659)	6500 (859)	8100 (2459)	8100 (2459)			
Circling - N of RWY (AAL)		6150 (509)	6260 (619)	6570 (929)	6630 (989)			
Distance to MAPt	NM	2	3	4	5	6	7	7.5
Altitude	FT	6190 (690)	6500 (1000)	6820 (1320)	7140 (1640)	7460 (1960)	7780 (2280)	7940 (2440)
Ground Speed	KTS	80	100	120	140	160		
Descent Rate (3.0°)	FT/MIN	425	530	635	745	850		

NOTES:
 1. Track shortening inside IAF not permitted.
 2. If above 8000ft at IMPEP, descent in the hold.
 3. Arrival outside of the STARs to expect radar vectoring from ATC.
 4. In case of radar failure route via IMPEP not below 10000ft and then to descend in the hold to 8000ft.

Bearings are magnetic. Altitudes, Elevation and Heights in feet. Distances in NM.

CHANGES: TAA, MAX temp, MSA, Circling, Bearings, Temp restriction, RDH, BNAV minimums, Notes, Initial WPT renamed.

Suggested Data Code

Serial #	Navigational performance	Path descriptor	Waypoint identifier	Waypoint coordinates	Fly-Over	True track / Magnetic track	Distance [nm]	Turn direction	Upper limit / Lower limit	Speed [kts]	VPA [°] / TCH [ft]	Remarks
1	RNP APCH	IF	IMPEP	22°23'25.18"S / 017°39'53.96"E	-	-	-	-	- / 8000	-	-	-
2	RNP APCH	TF	WH26F	22°24'51.14"S / 017°36'48.04"E	N	243.6 / 255	3.2	-	- / 8000	-	-	-
3	RNP APCH	CF	RW26	22°28'17.12"S / 017°29'21.61"E	Y	243.6 / 255	-	-	-	-	3.00 / 50	083° WHV / D1.1 WHV
4	RNP APCH	DF	IMPEP	22°23'25.18"S / 017°39'53.96"E	N	-	-	R	-	210	-	-

Hold Identification – AD 2.37

Holding Fix	Latitude (N) / Longitude (W)	Inbound True Track (degrees)	Inbound Mag Track (degrees)	Maximum Indicated Airspeed (kts)	Minimum Holding Altitude/ Level (FL/ft)	Maximum Holding Altitude/ Level (FL/ft)	Outbound time (min)	Direction of Turn
IMPEP	22°23'25.18"S / 017°39'53.96"E	243.5	255	-	8000	-	1	L