 <p>NCAA NAMIBIA CIVIL AVIATION AUTHORITY</p>	<p style="text-align: center;">REPUBLIC OF NAMIBIA NAMIBIA CIVIL AVIATION AUTHORITY AIRAC AIP SUPPLEMENT</p>	<p>Executive Director Namibia Civil Aviation Authority Private Bag 12003 Ausspannplatz WINDHOEK</p>
<p>Tel: +264 61 702082/2203 Fax: +264 61 702088 e-mail: aip@ncaa.na</p>		<p style="text-align: center;">AIRAC AIP SUP S04/2023 05 October 2023</p>

REVISED RNP APCH CHARTS ONDANGWA (FYOA) AERODROME

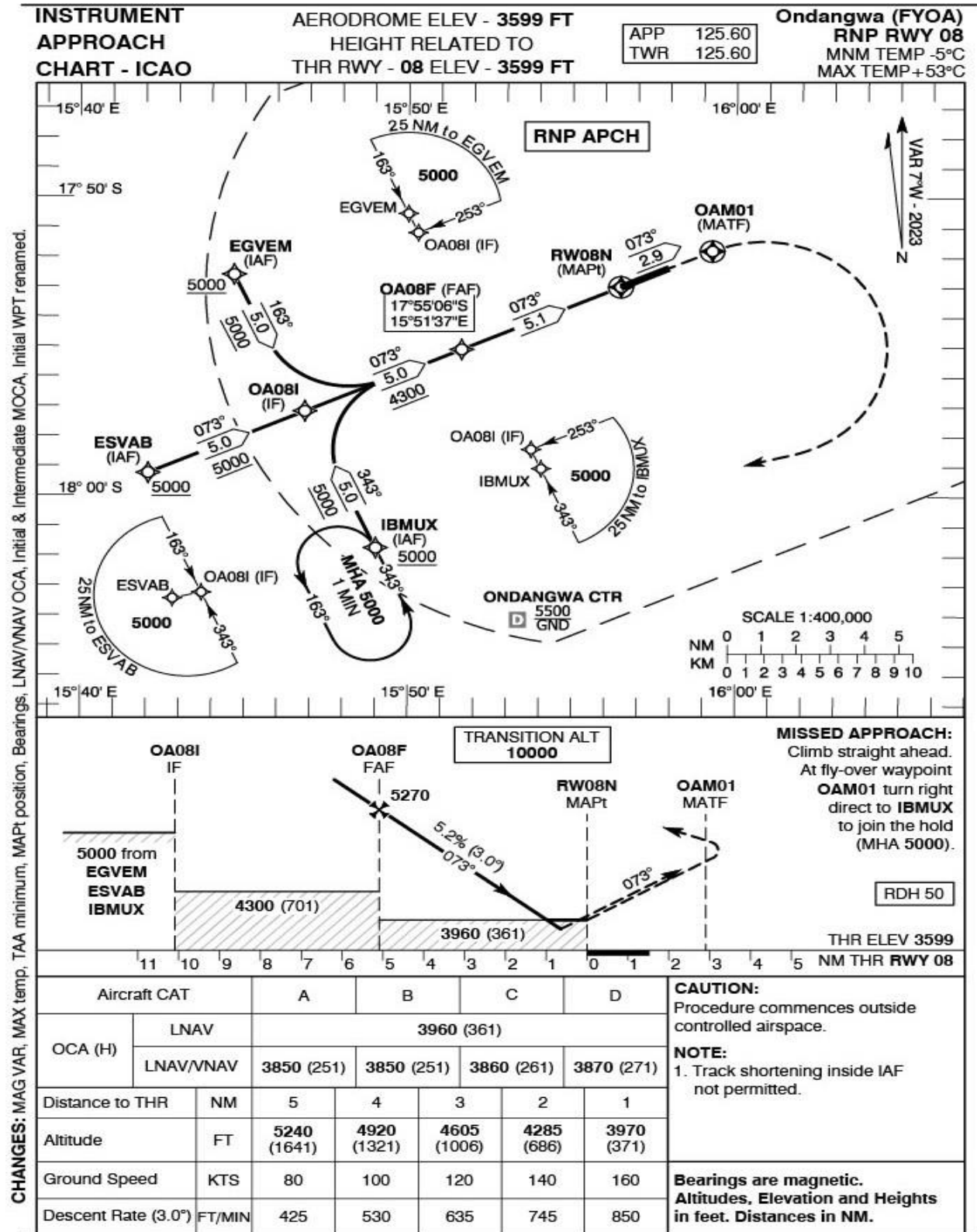
Effective date: 30 November 2023

Validity Period: PERM

1. This AIP SUP holds revised charts for the RNP APCH RWY 08 and RWY 26 at Ondangwa airport (FYOA).
2. The revision was due to a five year mandatory review of flight procedures as per the requirements of NAMCAR Part 173.
3. The review includes changing the 5LNCs for all the Initial Approach Fix (IAF) waypoints to comply with ICAO ICARD requirements.
4. Also included in this AIP SUP are the suggested Data Code sheets for the procedures.
5. Amend AIP ENR 4.4 by inserting the following Terminal Waypoints:

Name-code designator	Coordinates	Description	Remarks
1	2	3	
UNBIT	174338.51S 0160518.45E	IAF	replacing LYONZ
IBLAS	174608.34S 0161214.57E	IAF	replacing ZEBRA
IMTES	175247.10S 0160938.23E	IAF	replacing RHYNO

6. The amended procedure becomes effective at 2311300000 UTC.
7. This AIP SUP will be cancelled when incorporated in the AIP, anticipated March 2024.
8. **Appendices:**
 FYOA AD 2-19 – Instrument Approach Chart – ICAO RNP RWY 08
 FYOA AD 2-20 – Suggested Data Code RNP RWY 08
 FYOA AD 2-21 – Instrument Approach Chart – ICAO RNP RWY 26
 FYOA AD 2-22 – Suggested Data Code RNP RWY 26



Suggested Data Code

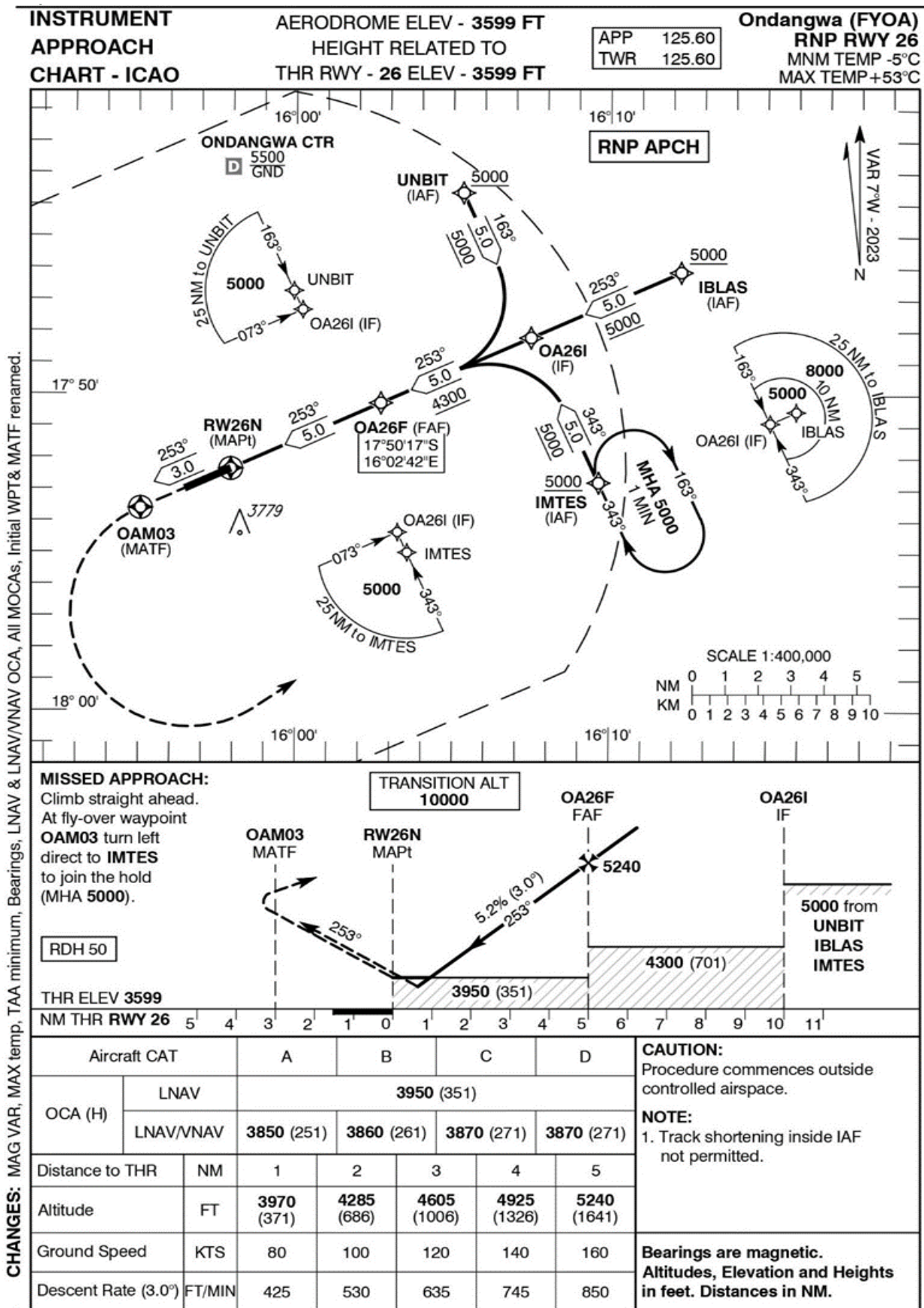
Serial #	Navigational performance	Path descriptor	Waypoint identifier	Waypoint coordinates	Fly-Over	True track / Magnetic track	Distance [nm]	Turn direction	Upper limit / Lower limit	Speed [kts]	VPA [°] / TCH [ft]	Remarks
1	RNP APCH	IF	IBMUX	18°01'44.9"S / 015°49'00.5"E	-	-	-	-	- / 5000	-	-	-
2	RNP APCH	TF	OA08I	17°57'10.6"S / 015°46'50.5"E	-	335.6 / 343	5.0	-	-	-	-	-
3	RNP APCH	TF	OA08F	17°55'06.3"S / 015°51'37.1"E	N	065.6 / 073	5.0	R	-	-	-	-
4	RNP APCH	TF	RW08N	17°52'59.7"S / 015°56'28.4"E	Y	065.6 / 073	5.1	-	-	-	3.00 / 50	-
5	RNP APCH	CF	OAM01	17°51'47.2"S / 015°59'15.4"E	Y	065.6 / 073	-	-	-	-	-	-
6	RNP APCH	DF	IBMUX	18°01'44.9"S / 015°49'00.5"E	N	-	-	R	-	-	-	-

Serial #	Navigational performance	Path descriptor	Waypoint identifier	Waypoint coordinates	Fly-Over	True track / Magnetic track	Distance [nm]	Turn direction	Upper limit / Lower limit	Speed [kts]	VPA [°] / TCH [ft]	Remarks
1	RNP APCH	IF	ESVAB	17°59'15.0"S / 015°42'03.8"E	-	-	-	-	- / 5000	-	-	-
2	RNP APCH	TF	OA08I	17°57'10.6"S / 015°46'50.5"E	-	065.6 / 073	5.0	-	-	-	-	-
3	RNP APCH	TF	OA08F	17°55'06.3"S / 015°51'37.1"E	N	065.6 / 073	5.0	-	-	-	-	-
4	RNP APCH	TF	RW08N	17°52'59.7"S / 015°56'28.4"E	Y	065.6 / 073	5.1	-	-	-	3.00 / 50	-
5	RNP APCH	CF	OAM01	17°51'47.2"S / 015°59'15.4"E	Y	065.6 / 073	-	-	-	-	-	-
6	RNP APCH	DF	IBMUX	18°01'44.9"S / 015°49'00.5"E	N	-	-	R	-	-	-	-

Serial #	Navigational performance	Path descriptor	Waypoint identifier	Waypoint coordinates	Fly-Over	True track / Magnetic track	Distance [nm]	Turn direction	Upper limit / Lower limit	Speed [kts]	VPA [°] / TCH [ft]	Remarks
1	RNP APCH	IF	EGVEM	17°52'36.3"S / 015°44'40.5"E	-	-	-	-	- / 5000	-	-	-
2	RNP APCH	TF	OA08I	17°57'10.6"S / 015°46'50.5"E	-	155.6 / 163	5.0	-	-	-	-	-
3	RNP APCH	TF	OA08F	17°55'06.3"S / 015°51'37.1"E	N	065.6 / 073	5.0	L	-	-	-	-
4	RNP APCH	TF	RW08N	17°52'59.7"S / 015°56'28.4"E	Y	065.6 / 073	5.1	-	-	-	3.00 / 50	-
5	RNP APCH	CF	OAM01	17°51'47.2"S / 015°59'15.4"E	Y	065.6 / 073	-	-	-	-	-	-
6	RNP APCH	DF	IBMUX	18°01'44.9"S / 015°49'00.5"E	N	-	-	R	-	-	-	-

Hold Identification

Holding Fix	Latitude (S) / Longitude (E)	Inbound True Track (degrees)	Inbound Mag Track (degrees)	Maximum Indicated Airspeed (kts)	Minimum Holding Altitude/ Level (FL/ft)	Maximum Holding Altitude/ Level (FL/ft)	Outbound time (min)	Direction of Turn
IBMUX	18°01'44.9"S / 015°49'00.5"E	335.6	343	250	5000	-	1	L



Suggested Data Codes

Serial #	Navigational performance	Path descriptor	Waypoint identifier	Waypoint coordinates	Fly-Over	True track / Magnetic track	Distance [nm]	Turn direction	Upper limit / Lower limit	Speed [kts]	VPA [°] / TCH [ft]	Remarks
1	RNP APCH	IF	UNBIT	17°43'38.5"S / 016°05'18.5"E	-	-	-	-	- / 5000	-	-	-
2	RNP APCH	TF	OA26I	17°48'12.8"S / 016°07'28.3"E	-	155.6 / 163	5.0	-	-	-	-	-
3	RNP APCH	TF	OA26F	17°50'17.3"S / 016°02'41.9"E	N	245.6 / 253	5.0	R	-	-	-	-
4	RNP APCH	TF	RW26N	17°52'21.7"S / 015°57'55.7"E	Y	245.6 / 253	5.0	-	-	-	3.00 / 50	-
5	RNP APCH	CF	OAM03	17°53'36.5"S / 015°55'03.7"E	Y	245.6 / 253	-	-	-	-	-	-
6	RNP APCH	DF	IMTES	17°52'47.1"S / 016°09'38.2"E	N	-	-	L	-	-	-	-

Serial #	Navigational performance	Path descriptor	Waypoint identifier	Waypoint coordinates	Fly-Over	True track / Magnetic track	Distance [nm]	Turn direction	Upper limit / Lower limit	Speed [kts]	VPA [°] / TCH [ft]	Remarks
1	RNP APCH	IF	IBLAS	17°46'08.3"S / 016°12'14.6"E	-	-	-	-	- / 5000	-	-	-
2	RNP APCH	TF	OA26I	17°48'12.8"S / 016°07'28.3"E	-	245.6 / 253	5.0	-	-	-	-	-
3	RNP APCH	TF	OA26F	17°50'17.3"S / 016°02'41.9"E	N	245.6 / 253	5.0	-	-	-	-	-
4	RNP APCH	TF	RW26N	17°52'21.7"S / 015°57'55.7"E	Y	245.6 / 253	5.0	-	-	-	3.00 / 50	-
5	RNP APCH	CF	OAM03	17°53'36.5"S / 015°55'03.7"E	Y	245.6 / 253	-	-	-	-	-	-
6	RNP APCH	DF	IMTES	17°52'47.1"S / 016°09'38.2"E	N	-	-	L	-	-	-	-

Serial #	Navigational performance	Path descriptor	Waypoint identifier	Waypoint coordinates	Fly-Over	True track / Magnetic track	Distance [nm]	Turn direction	Upper limit / Lower limit	Speed [kts]	VPA [°] / TCH [ft]	Remarks
1	RNP APCH	IF	IMTES	17°52'47.1"S / 016°09'38.2"E	-	-	-	-	- / 5000	-	-	-
2	RNP APCH	TF	OA26I	17°48'12.8"S / 016°07'28.3"E	-	335.6 / 343	5.0	-	-	-	-	-
3	RNP APCH	TF	OA26F	17°50'17.3"S / 016°02'41.9"E	N	245.6 / 253	5.0	L	-	-	-	-
4	RNP APCH	TF	RW26N	17°52'21.7"S / 015°57'55.7"E	Y	245.6 / 253	5.0	-	-	-	3.00 / 50	-
5	RNP APCH	CF	OAM03	17°53'36.5"S / 015°55'03.7"E	Y	245.6 / 253	-	-	-	-	-	-
6	RNP APCH	DF	IMTES	17°52'47.1"S / 016°09'38.2"E	N	-	-	L	-	-	-	-

Hold Identification

Holding Fix	Latitude (S) / Longitude (E)	Inbound True Track (degrees)	Inbound Mag Track (degrees)	Maximum Indicated Airspeed (kts)	Minimum Holding Altitude/ Level (FL/ft)	Maximum Holding Altitude/ Level (FL/ft)	Outbound time (min)	Direction of Turn
IMTES	17°52'47.1"S / 016°09'38.2"E	335.6	343	250	5000	-	1	R