 <p>NCAA NAMIBIA CIVIL AVIATION AUTHORITY</p>	<p>REPUBLIC OF NAMIBIA NAMIBIA CIVIL AVIATION AUTHORITY AIRAC AIP SUPPLEMENT</p>	<p>Executive Director Namibia Civil Aviation Authority Private Bag 12003 Ausspannplatz WINDHOEK</p>
<p>Tel: +264 61 702082/2203 Fax: +264 61 702088 e-mail: aip@ncaa.na</p>		<p>AIRAC AIP SUP S07/2024 22 February 2024</p>

AERODROME OBSTACLE CHART TYPE A HOSEA KUTAKO INTERNATIONAL AIRPORT (FYWH)

Effective date: 18 April 2024

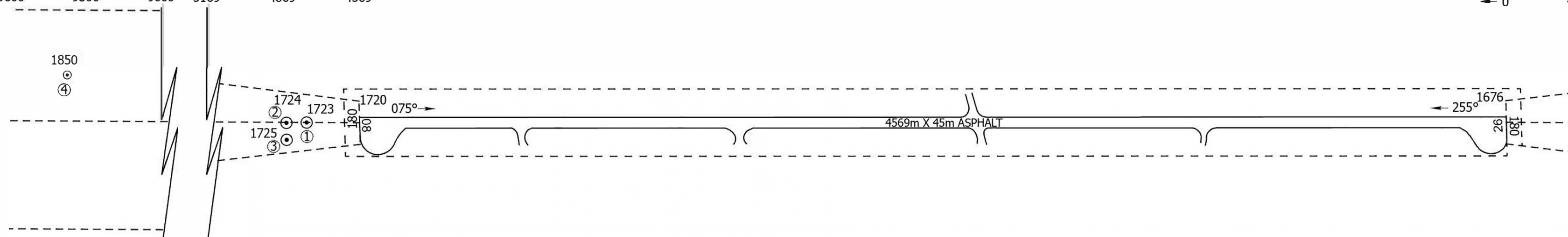
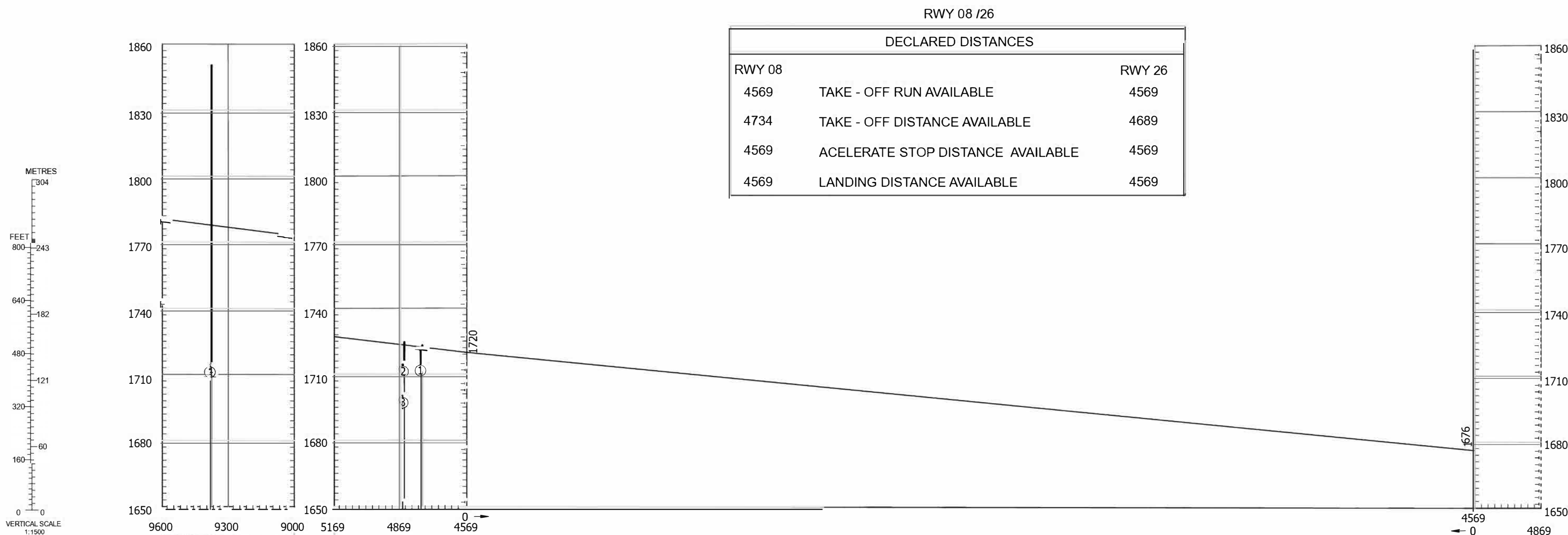
Validity Period: PERM

1. This AIP SUP holds Aerodrome Obstacle Chart Type A for Hosea Kutako International Airport (FYWH).
2. The production was necessitated by requirements contained in NAMCAR Part 175.
3. The production of the chart illustration, the 1.2 per cent slope shown on the profile plane having a common origin with the take-off flight path area.
4. Obstacles which penetrate the slope and that lie within the take-off flight path area are drawn as per NAMCAR Part 175.
5. This AIP SUP will be cancelled when incorporated into the AIP, anticipated July 2024.

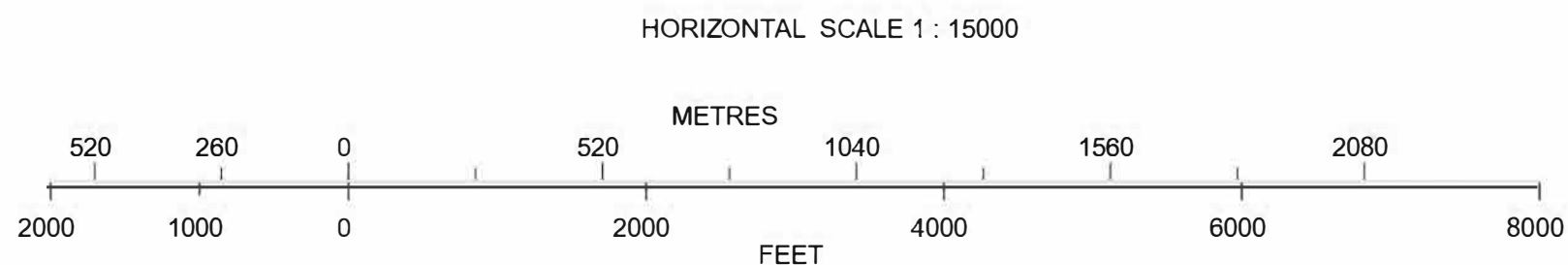
DIMENSIONS AND ELEVATIONS IN METRES

RWY 08 / 26

MAGNETIC VARIATION 11.92°W - JAN 2020



LEGEND	
IDENTIFICATION NUMBER	①
LOCALIZER, ILS MONITOR, POWER TRANSMISSION LINE	⊙



AMENDMENT RECORD		
No.	DATE	ENTERED BY