

## FYOG AD 2.19 RADIO NAVIGATION AND LANDING AIDS

Type of aid, CAT of ILS/MLS (for VOR/ILS/MLS give VAR)	ID	Frequency	Hours of Operation	Position of transmitting antenna co-ordinates	Elevation of DME transmitting antenna	Remarks
1	2	3	4	5	6	7
RNP APCH	N/A	1575.42 MHz	H24	N/A	N/A	Transmitting antennas are satellite based

## FYOG AD 2.20 LOCAL TRAFFIC REGULATIONS

### 1. Aerodrome regulations

1.1 **Warning:** Blasting: Pilots are warned to avoid flying below 1500 FT along the coast between Oranjemund AD and Chamais Bay where blasting may take place at irregular intervals.

1.2 Occasional blasting on the northern bank of the Orange River from FYOG aerodrome to Sendelings Drift. Aircraft to remain clear of area and do not overfly less than 1500 FT.

1.3 **Navigation Warning:** Low level helicopter operations outside ATA operating on 124.8 MHz. Doing ship service.

### 2. Taxiing to and from stands

NIL INFO AVBL.

### 3. Parking area for small aircraft.

In front of the terminal

### 4. Parking area for helicopters

NIL INFO AVBL.

### 5. Apron - Taxiing during winter conditions

NIL INFO AVBL.

### 6. Taxiing - Limitations

NIL INFO AVBL.

### 7. School and training flights - Technical test flights - Use of runways

NIL INFO AVBL.

### 8. Helicopter traffic - Limitation

See AD 2.20 para 1, sub-para 1.3.

**9. Removal of disabled aircraft from runways**

Available

**FYOG AD 2.21 NOISE ABATEMENT PROCEDURES**

Avoid flights over town

**FYOG AD 2.22 FLIGHT PROCEDURES**

Pilots are requested to avoid overflying the Ramsar Nature site from the Orange River mouth to the Border Bridge.

**FYOG AD 2.23 ADDITIONAL INFORMATION**

Sporadic large birds activities due to proximity to Riverine Ramsar site and Coastal Environment. Pilots to exercise caution.

**FYOG AD 2.24 CHARTS RELATED TO ORANJEMUND**

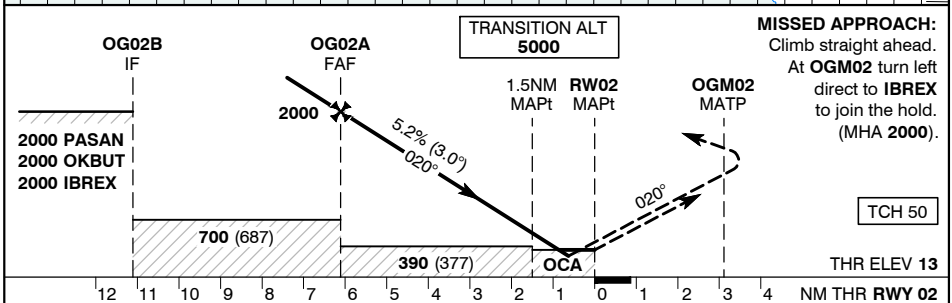
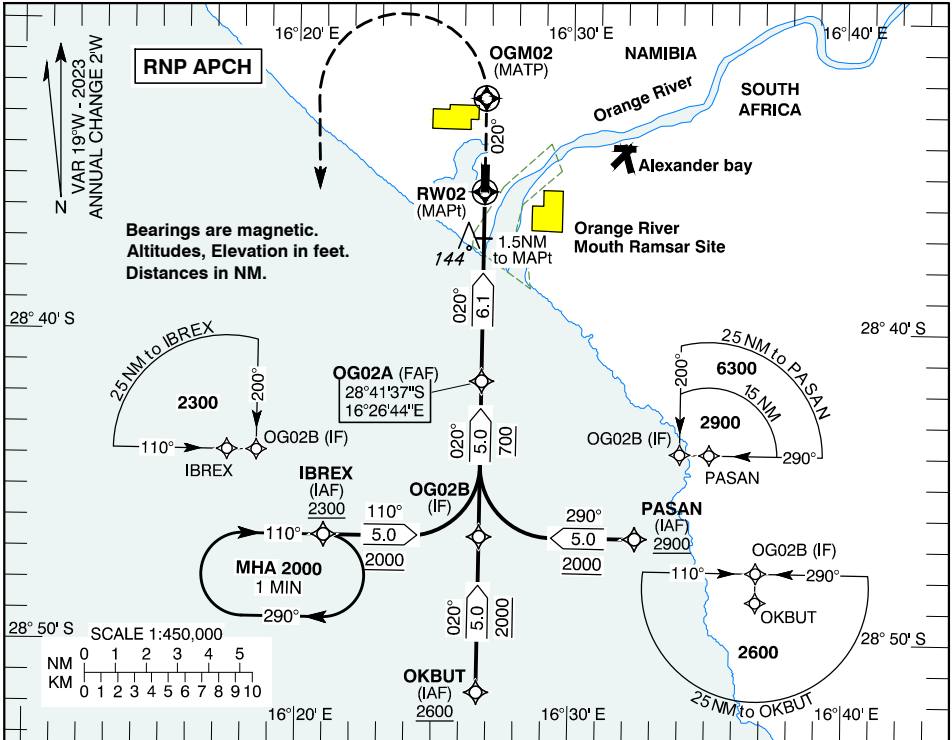
| Instrument Approach Chart – ICAO RNP RWY 02  
Data Code - ICAO RNP RWY 02  
Instrument Approach Chart – ICAO RNP RWY 20  
Data Code – ICAO RNP RWY 20

Page  
FYOG AD 2-9  
FYOG AD 2-10  
FYOG AD 2-11  
FYOG AD 2-12

**INSTRUMENT APPROACH CHART - ICAO** AERODROME ELEV - 13 FT HEIGHT RELATED TO THR RWY - 02 ELEV - 13 FT

UNM 118.70  
 ATIS 127.15

**Oranjemund (FYOG) RNP RWY 02**  
 MNM TEMP -10°C  
 MAX TEMP +60°C



Aircraft CAT		A		B		C	
OCA (H)	LNAV	340 (327)					
	LNAV/VNAV	270 (257)	270 (257)	270 (257)	270 (257)	280 (267)	280 (267)
Circling (Heights AAL)		640 (627)	740 (727)	740 (727)	740 (727)	960 (947)	960 (947)
Distance to MAPt	NM	6	5	4	3	2	1
Altitude	FT	1975 (1962)	1655 (1642)	1335 (1322)	1015 (1002)	700 (687)	380 (367)
Ground Speed	KTS	80	100	120	140	160	160
Descent Rate (3.0°)	FT/MIN	425	530	635	745	850	850

**CAUTION:**  
 1. Sporadic large bird's activities.  
 2. Avoid overflying the Ramsar Nature Site between the Orange River Mouth and the Border Bridge.

**NOTE:**  
 1. Only attempt LNAV/VNAV app. once QNH is received from ATIS.

**COMMUNICATION FAILURE PROCEDURE:**  
 Squawk 7600. Follow the Missed Approach Procedure to IBREX. Enter the Hold at IBREX. Hold for 5 mins, then complete the Approach.A

CHANGES: New procedure.

Serial #	Navigational performance	Path descriptor	Waypoint identifier	Waypoint coordinates	Fly-Over	True track [°] / Magnetic track [°]	Distance [nm]	Turn direction	Upper limit [ft] / Lower limit [ft]	Speed [kts]	VPA [°] / TCH [ft]	Remarks
1	RNP APCH	IF	PASAN	284640.17S / 0163222.74E	-	-	-	-	- / 2900	-	-	-
2	RNP APCH	TF	OG02B	284638.19S / 0162641.35E	N	270.4 / 290	5.0	-	- / 2000	-	-	-
3	RNP APCH	TF	OG02A	284137.41S / 0162643.73E	N	000.4 / 020	5.0	R	- / 700	-	-	-
4	RNP APCH	TF	RW02	283531.29S / 0162646.67E	Y	000.4 / 020	6.1	-	-	-	3.00 / 50	-
5	RNP APCH	CF	OGM02	283230.83S / 0162648.11E	Y	000.4 / 020	-	-	-	-	-	-
6	RNP APCH	DF	IBREX	284635.97S / 0162059.97E	N	-	-	L	- / 2000	-	-	-

Serial #	Navigational performance	Path descriptor	Waypoint identifier	Waypoint coordinates	Fly-Over	True track [°] / Magnetic track [°]	Distance [nm]	Turn direction	Upper limit [ft] / Lower limit [ft]	Speed [kts]	VPA [°] / TCH [ft]	Remarks
1	RNP APCH	IF	OKBUT	285138.96S / 0162638.96E	-	-	-	-	- / 2600	-	-	-
2	RNP APCH	TF	OG02B	284638.19S / 0162641.35E	N	000.4 / 020	5.0	-	- / 2000	-	-	-
3	RNP APCH	TF	OG02A	284137.41S / 0162643.73E	N	000.4 / 020	5.0	-	- / 700	-	-	-
4	RNP APCH	TF	RW02	283531.29S / 0162646.67E	Y	000.4 / 020	6.1	-	-	-	3.00 / 50	-
5	RNP APCH	CF	OGM02	283230.83S / 0162648.11E	Y	000.4 / 020	-	-	-	-	-	-
6	RNP APCH	DF	IBREX	284635.97S / 0162059.97E	N	-	-	L	- / 2000	-	-	-

Serial #	Navigational performance	Path descriptor	Waypoint identifier	Waypoint coordinates	Fly-Over	True track [°] / Magnetic track [°]	Distance [nm]	Turn direction	Upper limit [ft] / Lower limit [ft]	Speed [kts]	VPA [°] / TCH [ft]	Remarks
1	RNP APCH	IF	IBREX	284635.97S / 0162059.97E	-	-	-	-	- / 2300	-	-	-
2	RNP APCH	TF	OG02B	284638.19S / 0162641.35E	N	090.4 / 110	5.0	-	- / 2000	-	-	-
3	RNP APCH	TF	OG02A	284137.41S / 0162643.73E	N	000.4 / 020	5.0	L	- / 700	-	-	-
4	RNP APCH	TF	RW02	283531.29S / 0162646.67E	Y	000.4 / 020	6.1	-	-	-	3.00 / 50	-
5	RNP APCH	CF	OGM02	283230.83S / 0162648.11E	Y	000.4 / 020	-	-	-	-	-	-
6	RNP APCH	DF	IBREX	284635.97S / 0162059.97E	N	-	-	L	- / 2000	-	-	-

#### Hold Identification

Holding Fix	Latitude (N) / Longitude (W)	Inbound True Track (degrees)	Inbound Mag Track (degrees)	Maximum Indicated Airspeed (kts)	Minimum Holding Altitude/ Level (FL/ft)	Maximum Holding Altitude/ Level (FL/ft)	Outbound time (min)	Direction of Turn
IBREX	284635.97S / 0162059.97E	090.5	110	-	2000	-	1	R